

2.8 SWING CLAMP CYLINDERS SERIES MSR

Double acting, max 350 bar

Capacity: 56, 91 and 143 kN

Working pressure: 350 bar

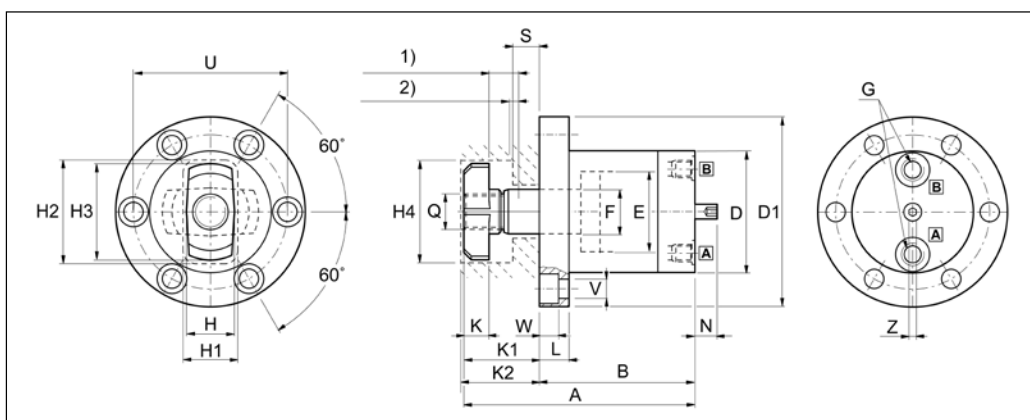
Double acting

Temperature range: 5°C till 60°C

DESCRIPTION

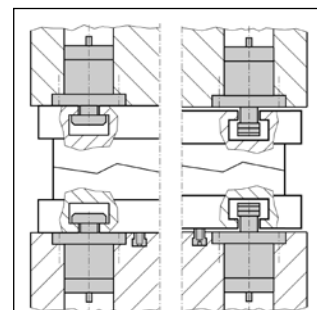
The EAS swing clamp arm swings 90 degrees and then clamps vertically. Ideal for mounting beneath the surface bed or bolster surface to allow unobstructed part or die loading and unloading. For the clamping arm it is required to mount flanges on the dies or to have T-slot openings.

In case two sensors are required to determine the extended and the clamped position add suffix 'P' behind the model number and order the inductive sensors and cables. For example MSR 51 P. These sensors are mounted at the bottom of the cylinders. Dimensions on request. For Viton seals (max 200°C) add V behind the model number like for example MSR-51-V. For flange mounted oil connections order model number with F. For example MSR-91-F. For F series dimensions on request.



SELECTION CHART INDUCTIVE SENSOR AND CABLES

EAS Model Number	Thread	Specs	Detection distance
PSM8NO Normally open	M8X1	10-30V, DC 150mA	3 mm
SCEL5 SCEL15 SCSL5 SCSL15		90 degree elbow with 5 meter cable 90 degree elbow with 15 meter cable Straight connector with 5 meter cable Straight connector with 15 meter cable	



SELECTION CHART

EAS Model Number	Clamping force (kN)	Operating pressure (bar)	Stroke* total (mm)	Stroke clamp (mm)	Oil capacity (cm3)	Oil retract capacity (cm3)	Max flow (l/min)
MSR 51	56	350	20	5	32	46	1,5
MSR 91	91	350	20	5	52	76	1,5
MSR 141	143	350	30	5	123	183	2,5

SELECTION CHART (FOLLOW UP)

EAS Model Number	Dimensions in mm																						
	A	B	D	D1	E	F	G	H	H1	H2	K	K1	K2	L	Q	S	U	V	W	Z	H3	H4	N
MSR 51	157	105	82	128	54	30	G1/4"	33	37	70	17	52	53	20	M20X1,5	51S*=16-21	104	13	13	6	65	70	15
MSR 91	178	115	104	160	70	40	G3/8"	40	46	86	24	63	66	28	M30X1,5	91S*=20-25	130	18	17	6	80	86	8
MSR 141	224	140	126	192	90	50	G3/8"	50	58	103	30	84	87	35	M36X1,5	141S*=25-30	156	21,5	21	8	95	103	10