

# 4 PUMP UNITS AND CONTROLS

# CUE

## SELECTION CHART

| EAS Model Number | Max hydraulic pressure (bar*) | Flow (l/min) | Reservoir size (L) | Quantity valves | Dimensions in mm |     |     |     |    |     |     |
|------------------|-------------------------------|--------------|--------------------|-----------------|------------------|-----|-----|-----|----|-----|-----|
|                  |                               |              |                    |                 | L1               | L2  | H   | H1  | H2 | D1  | D2  |
| EPA 601 V1       | 350                           | 2,4          | 6                  | 1               | 524              | 395 | 385 | 150 | 90 | 220 | 150 |

\* at 6 bar air pressure

Ordering code: EPA 601-V1-A1-0

V1 = with 1 valve, V2= 2 valves, V3=3 valves, V4=4 valves

A1 = +1 additional air valves for air operated die lifters

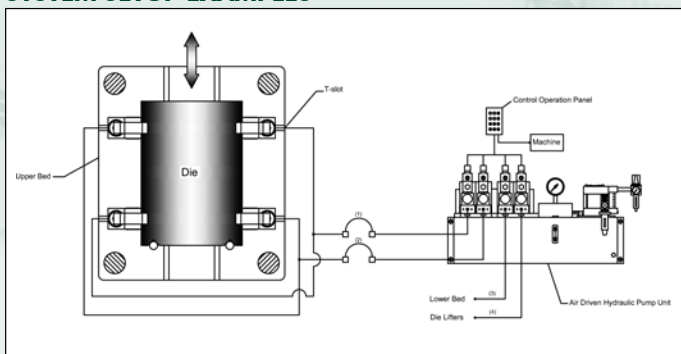
0 =voltage solenoid with 0=DC 24V, 1=110V, 2=230V

Ordering code example:

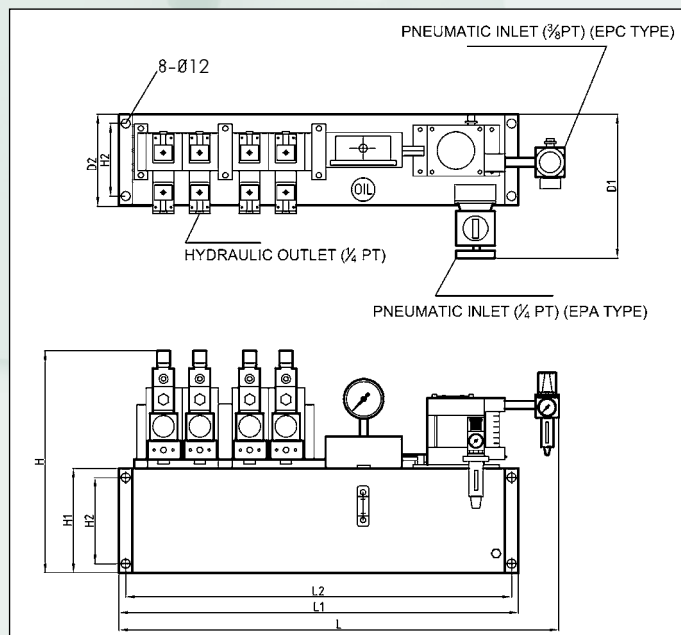
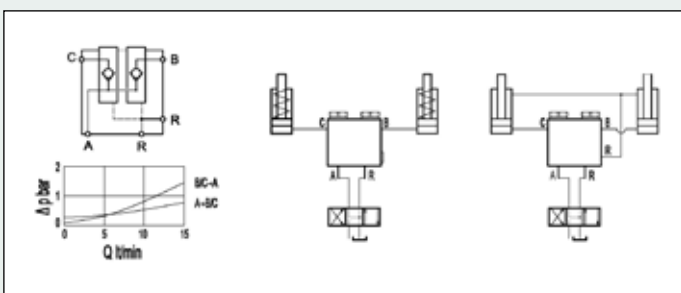
EPA 601-V3-0 is an EAS Air Pump with 60:1 ratio with 3 valves and 24V DC for the valves.

## OPERATIONAL PANEL TYPE CUE-A-B (SEE PAGE 49)

### SYSTEM SETUP EXAMPLES



T-slot mounted single acting rocker clamps ERC, hollow rams ECA or MHC or T-slot clamps MTC with split safety circuit on the upper bed and one circuit on the lower press bed and one circuit for the single acting die lifters.



## 4.4 DOUBLE HYDRAULIC CHECK VALVE TYPE EDCV-1

For usage on single acting cylinders and to protect the system against hose leakage and still keep the cylinders under pressure EAS offers a double hydraulic check valve type EDCV-1 to which 2 single acting hydraulic circuits can be connected. Ask EAS for dimensions and details.

