

# 4 PUMP UNITS AND CONTROLS



## SELECTION CHART

EAS Model Number	Max hydraulic pressure (bar*)	Flow (l/min)	Reservoir size (L)	Quantity valves	Dimensions in mm						
					L1	L2	H	H1	H2	D1	D2
EPA 601 V1	350	2,4	6	1	524	395	385	150	90	220	150

\* at 6 bar air pressure

Ordering code: EPA 601-V1-A1-0

V1 = with 1 valve, V2= 2 valves, V3=3 valves, V4=4 valves

A1 = +1 additional air valves for air operated die lifters

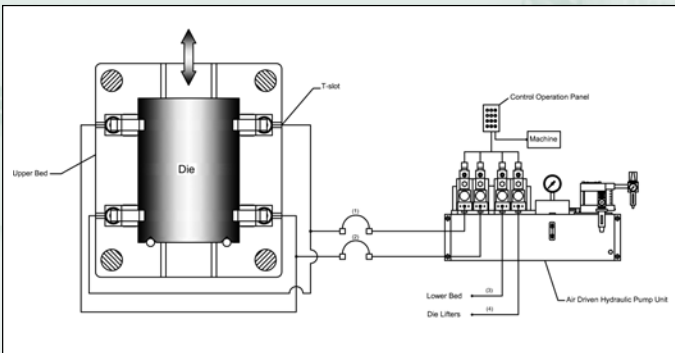
0 =voltage solenoid with 0=DC 24V, 1= 110V, 2=230V

Ordering code example:

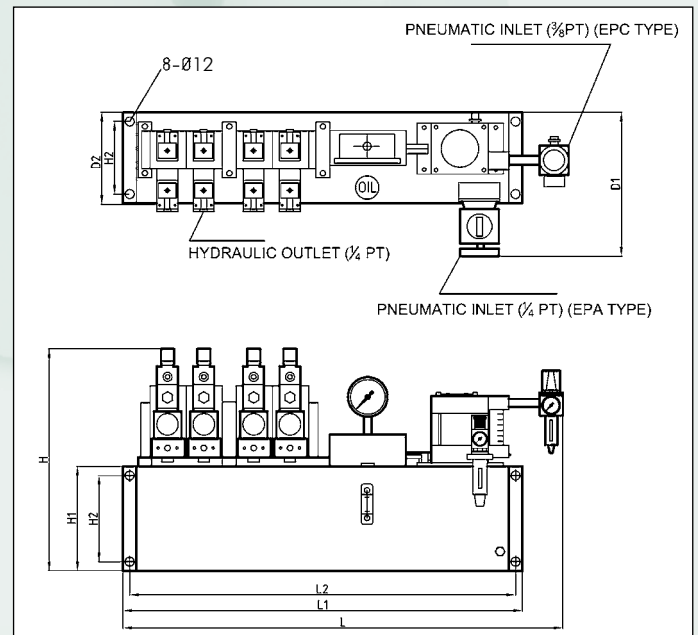
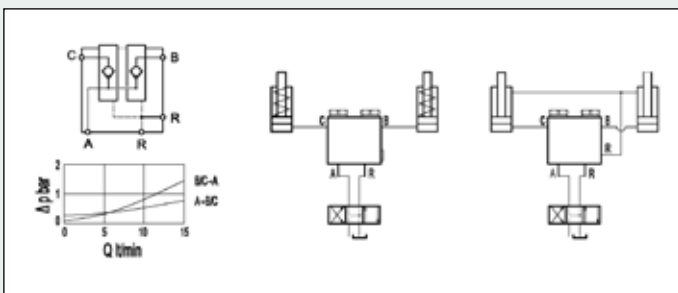
EPA 601-V3-0 is an EAS Air Pump with 60:1 ratio with 3 valves and 24V DC for the valves.

## OPERATIONAL PANEL TYPE CUE-A-B (SEE PAGE 49)

### SYSTEM SETUP EXAMPLES



T-slot mounted single acting rocker clamps ERC, hollow rams ECA or MHC or T-slot clamps MTC with split safety circuit on the upper bed and one circuit on the lower press bed and one circuit for the single acting die lifters.



## 4.4 DOUBLE HYDRAULIC CHECK VALVE TYPE EDCV-1

For usage on single acting cylinders and to protect the system against hose leakage and still keep the cylinders under pressure EAS offers a double hydraulic check valve type EDCV-1 to which 2 single acting hydraulic circuits can be connected. Ask EAS for dimensions and details.

