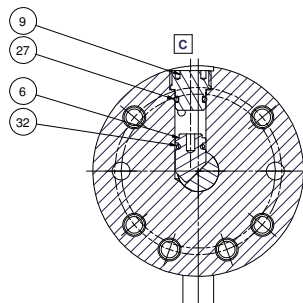
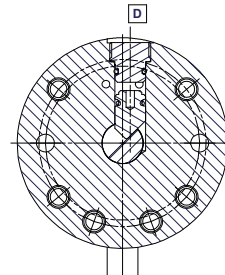


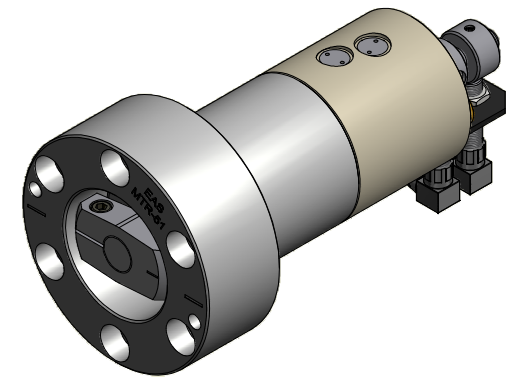
SECTION A-A



SECTION C-C



SECTION D-D



Parts List			
ITEM	QTY	PART NUMBER	DESCRIPTION
1	1	DQ1071-005	BASE
2	1	DQ1073-040S	PLUNGER ASS'Y
2.1	1	DQ1073-040	PLUNGER
2.2	1	CAA627.061-2A	PIN-PARALLEL O.D.6x28
3	1	DQ1072-044	STOPRING
4	1	DQ1074-299	CLAMP ARM
5	1	DQ1075-104	SHAFT
6	2	DQ1076-040	PLUNGER
7	1	DQ1077-038	ADAPTOR RING
8	1	DQ1078.111	BRACKET
9	2	DQ1091-044	STOPRING
10	1	CCE1012.044-1A	RING-RETAINER 12x1
11	1	CBA621.028-1A	SCREW M6x20
12	6	CCA843-0281A	SCREW M8x80
13	2	CBA515.028-1D	SCREW M5x10
14	2	CCA613.028-5C	SETSCREW
15	2	DQ1079-039	SENSOR BUSH
16	1	CAA415.061-2A	PIN-PARALLEL O.D.4x12
17			
18	2	CS235-006	TERMINAL PLUG
19	2	CS236-006	TERMINAL PLUG
20			
21			
22	1	DQ1087-776	WIPER
23	1	DQ1088-041	STEPSEAL
24	1	DQ1089-041	GLYDRING
25	1	B1135-803	O-RING
26	1	B1005-503	O-RING
27	2	B1012-903	O-RING
28	1	B1016-803	O-RING
29	2	DQ895-041	GUIDE STRIP
30	1	DQ1090-107	PLAIN BEARING
31	1	DQ896-041	STEPSEAL
32	2	B1011-803	O-RING
33	2	DQ1488-372	PROXIMITY SWITCH M12x1
34	2	CZ64-008	CABLE PROX. SWITCH M12

E 0044	B SEE ECO	0808
E0000	A SEE ECO	1105
EASIC CHANGES DATE		

TOLERANCES ON DIMENSIONS UNLESS SPECIFIED IN MM (INCH)		TOL. ON RADII UNLESS SPEC. IN MM (INCH)	
SIZE	0.5 - 3	0.5 - 3	0.5 - 3
SIZE	100 - 24	100 - 24	100 - 24
TOL.	0.1 (0.004)	0.1 (0.004)	0.1 (0.004)

SPECIFICATIONS		EAS a global company			
32 Ra μ m [Ra μ]		SCALE 1:1		DESCRIPTION 3 POS. SWING CLAMP 50 kN MODEL	
WEIGHT: $\pm 0,850$ kg		DATE 15-06-2005		DRAWING NO. MTR-51	
GROUP	C	DO NOT SCALE	DATE	Rev	002
TECH.	M	DRAWING	CH	DATE	A1