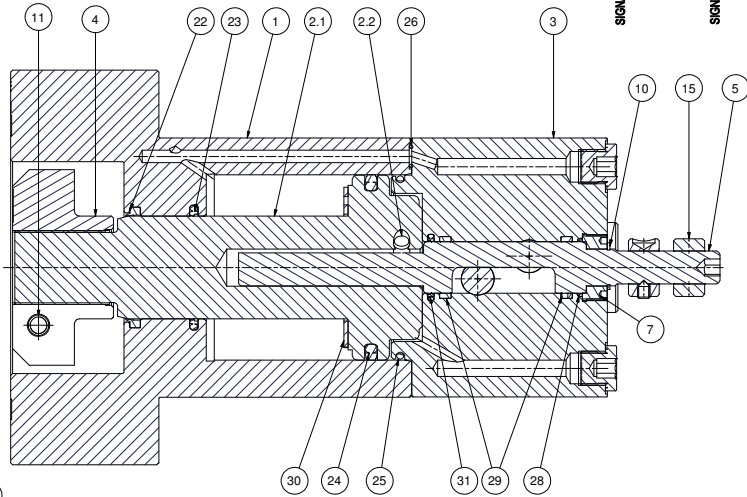
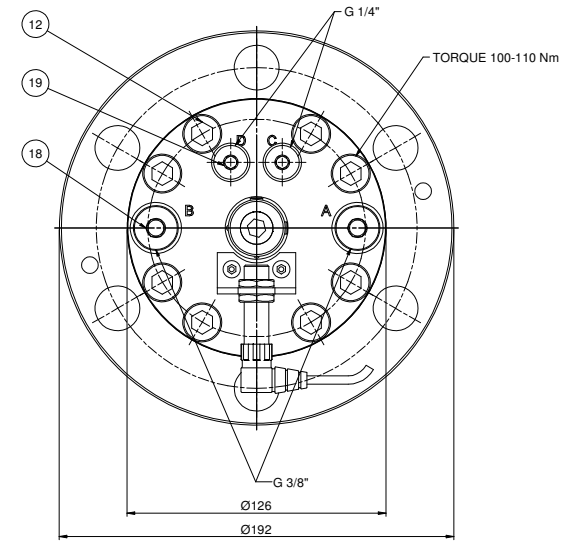
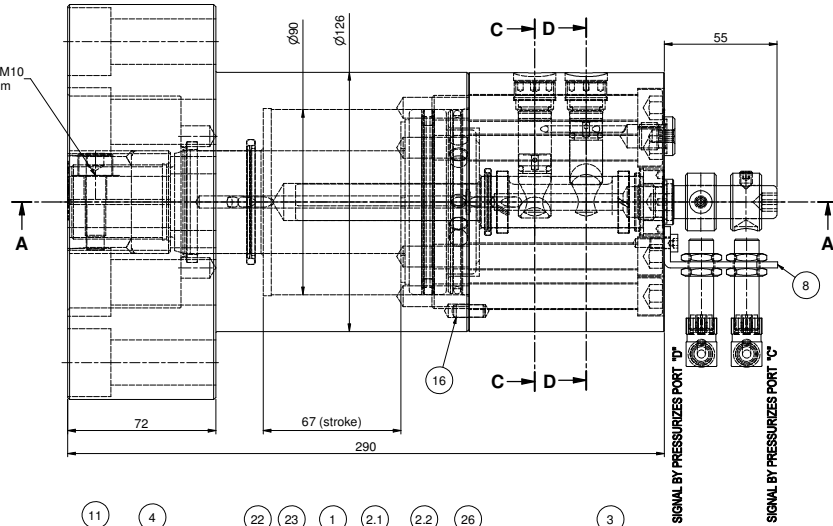


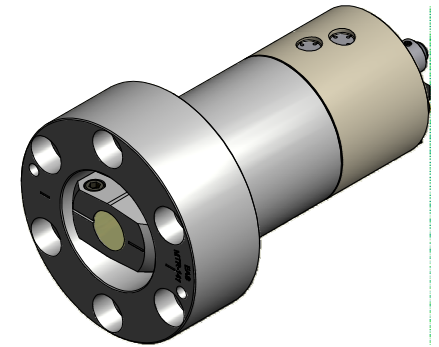
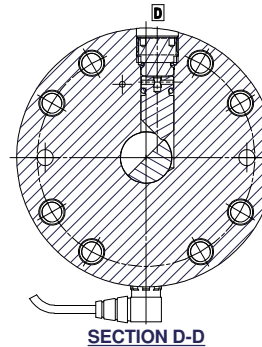
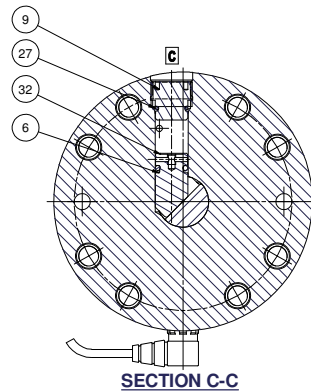
POSITION OF HAMER WHEN PRESSURIZES PORT "C"

OPTIONAL
PIN-SPRING Ø10x50/60 HEAVY TYPE
DIN 1481 (CCA1039/1043.057-1A)

TORQUE M10
60-65 Nm



SECTION A-A



Parts List			
ITEM	QTY	PART NUMBER	DESCRIPTION
1	1	DQ1106.005	BASE
2	1	DQ1107-040S	PLUNGER ASS'Y
2.1	1	DQ1107-040	PLUNGER
2.2	1	CAA833.061-2A	DOWEL PIN 8x40
3	1	DQ1108.044	STOPRING
4	1	DQ1109.299	CLAMP ARM
5	1	DQ1110.104	SHAFT
6	2	DQ1111-040	PLUNGER
7	1	DQ1112-038	ADAPTOR RING
8	1	DQ1078.111	BRACKET
9	2	DQ1113-044	STOPRING
10	1	CCE1018.044-1A	RING-RETAINER 18x1.2
11	1	CCA1025.028-1A	SCREW M10x30
12	8	CCA1247.028-1A	SCREW M12x100
13	2	CBA515.028-1D	SCREW M5x10
14	2	CCA613.028-5C	SETSCREW
15	2	DQ1117-039	SENSOR RING
16	1	CAA619.061-2A	PIN-PARALLEL O.D.6x16
17			
18	2	CS234-006	TERMINAL PLUG
19	2	CS235-006	TERMINAL PLUG
20			
21			
22	1	DQ1115-776	WIPER RX 006P
23	1	CS855-041	STEPSEAL
24	1	DQ982-041	GLYDRING + O-RING
25	1	B1236-903	O-RING
26	1	B1006-503	O-RING
27	2	B1014-903	O-RING
28	1	B1022-803	O-RING
29	2	DQ1114-155	GUIDE STRIP
30	1	DQ1118.107	PLAIN BEARING
31	1	CS819-041	STEPSEAL
32	2	B1111-803	O-RING
33	2	DQ1488-372	PROXIMITY SWITCH M12x1
34	2	DQ1242-008	CABLE PROX. SWITCH M12

E 004	A SEE E 00	0008
E 0001	RELEASED	1008

EASC CHANGES DATE		

TOLERANCES ON DIMENSIONS UNLESS SPECIFIED AS MM (IN)				TOL. ON ANGLES UNLESS SPECIFIED AS MM (IN)					
SIZE	0-8	0-8	30-50	100-315	315-1000	SIZE	0-8	8	6-30
	[0.025]	[0.125]	[0.125]	[0.125]	[0.125]		[0.025]	[0.025]	[0.125]
TOL.	0.1 (0.004)	0.2 (0.008)	0.3 (0.012)	0.5 (0.020)	0.8 (0.031)	Ø 1"	0.2 (0.008)	0.5 (0.020)	1 (0.040)

SPECIFICATIONS		DIMENSIONS IN BRACKETS ARE IN (INCH)	
EAS a global company			
32 Rajm Raju			
WEIGHT: 2 30,000 kg			
SCALE: 1:1.25			
DO NOT SCALE			
GROUP	C.	DATE	DATE
TECH	M.	CH	DATE
DESCRIPTION: 3 POS. SWINGCLAMP 140 KN MODEL			Rev: 002
DRAWING NO. MTR-141			A1



DE HEDDE HOED NIA NIE DO RENOVACIE NOLAND
POSTBOX 480 MALDENKIE WJ 5301-0480 LUSA

THIS DOCUMENT IS THE PROPERTY OF EAS. IT IS NOT TO BE REPRODUCED OR TRANSMITTED IN ANY FORM OR BY ANY MEANS, ELECTRONIC OR MECHANICAL, WITHOUT THE WRITTEN PERMISSION OF EAS.