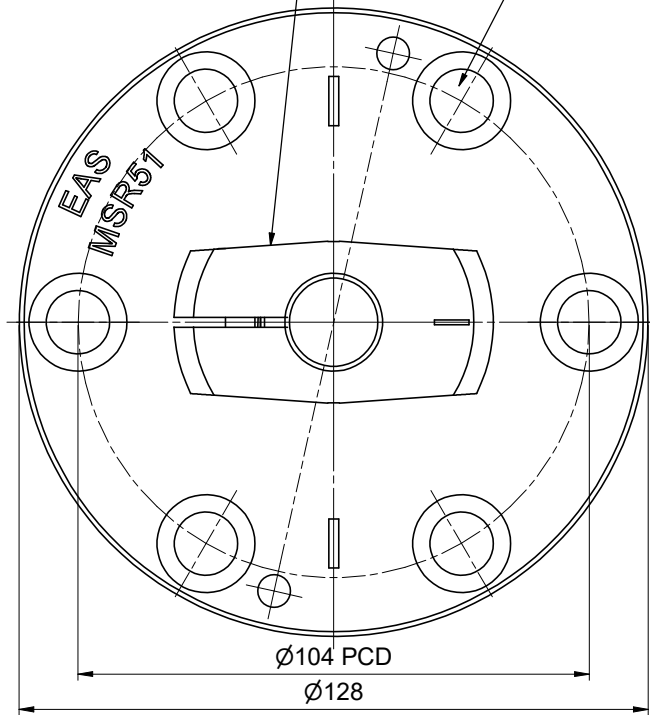
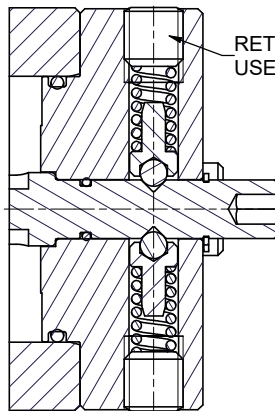
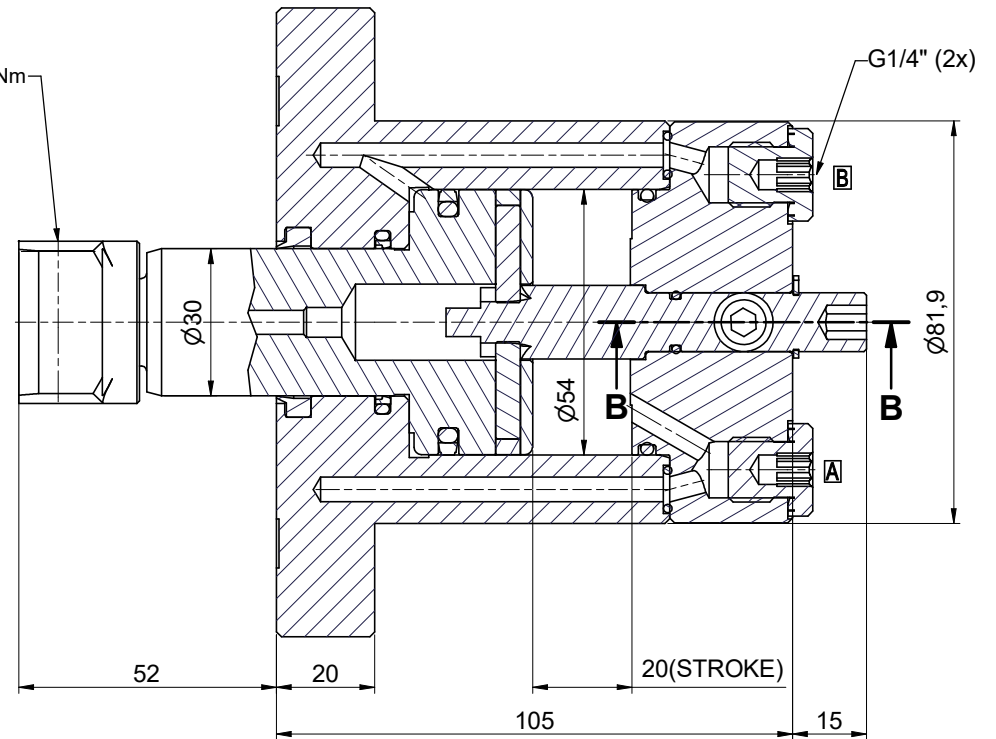


POSITION OF HAMMER WHEN PRESSURIZES PORT "A"

HOLES FOR M12 (6x) TORQUE 32-35Nm



TORQUE 12-14Nm



RETURN SCREWS Nrot. = ~0,8x AFTER BLOCK (290°-320°) USE LOCKTITE 222

**SECTION B-B**

E0075	Ch. Kick Out Syst.	06/13
E0033	RELEASED	03/10
EASC	CHANGES	DATE

TOLERANCES ON DIMENSIONS UNLESS SPECIFIED ± MM[inch]					TOL. ON ANGLES UNLESS SPEC.	TOL. ON RADII UNLESS SPEC. ± MM[inch]				
SIZE	0.5-6 [.02-.24]	6-30 [.24-1.18]	30-120 [1.18-4.72]	120-315 [4.72-12.40]		315-1000 [12.40-39.37]	SIZE	0.5-3 [.02-.12]	3-6 [.12-.24]	6-30 [.24-1.18]
TOL.	0.1 [.004]	0.2 [.008]	0.3 [.012]	0.5 [.02]	0.8 [.03]	± 1'	TOL.	0.2 [.008]	0.5 [.02]	1 [.04]
SPECIFICATIONS					DIMENSIONS IN BRACKETS ARE IN [INCH]					
WEIGHT: ± 5,139 kg					EAS a global company					
					FINISH UNLESS SPECIFIED 3,2 $\sqrt{Ra\mu m [Ra\mu]}$					
ALL ANGULAR DIMENSIONS ARE ± 1' UNLESS SPECIFIED					SCALE	1:1				
GROUP	C.	DO NOT SCALE DRAWING			DR	bontj	DATE	DRAWING NO. Rev		
TECH.	M.				CH.		DATE	MSR-51V 9/02		
CODES								A3		



DE HOOGHE HOEK 19A 3927 GG RENSWOUDE HOLLAND  
POSTBOX 460 MILWAUKEE WI 53201-0460 USA

DESCRIPTION  
**MSR-51 ASS'Y(VITON) SWING CLAMP**