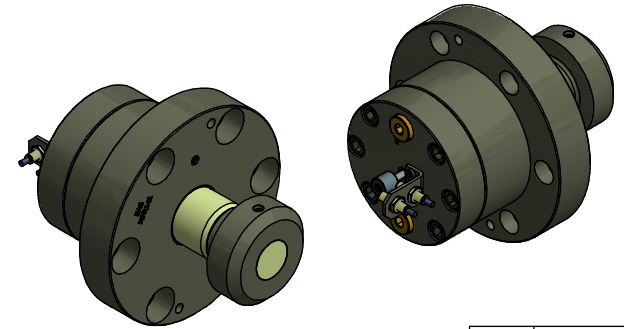
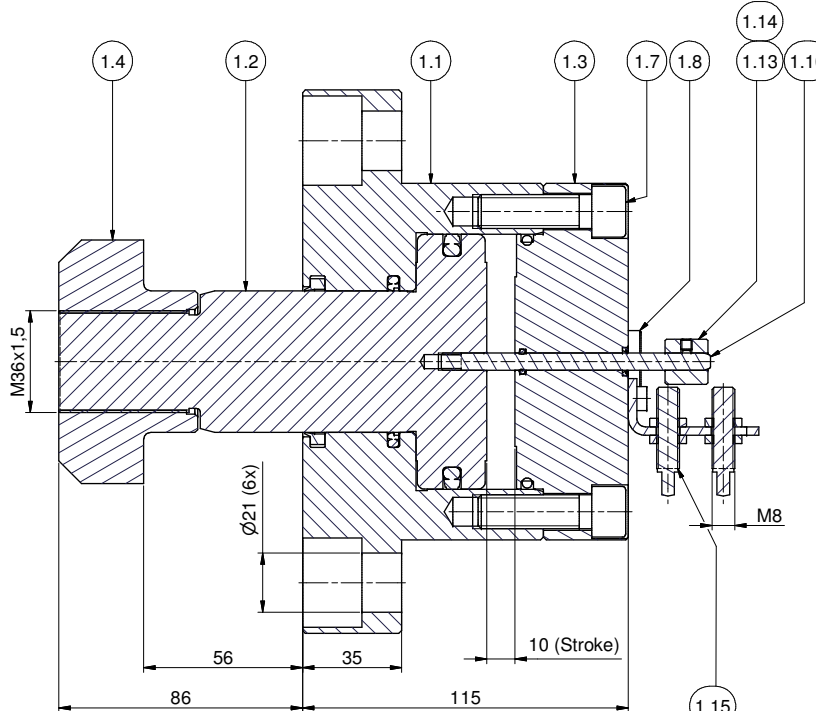
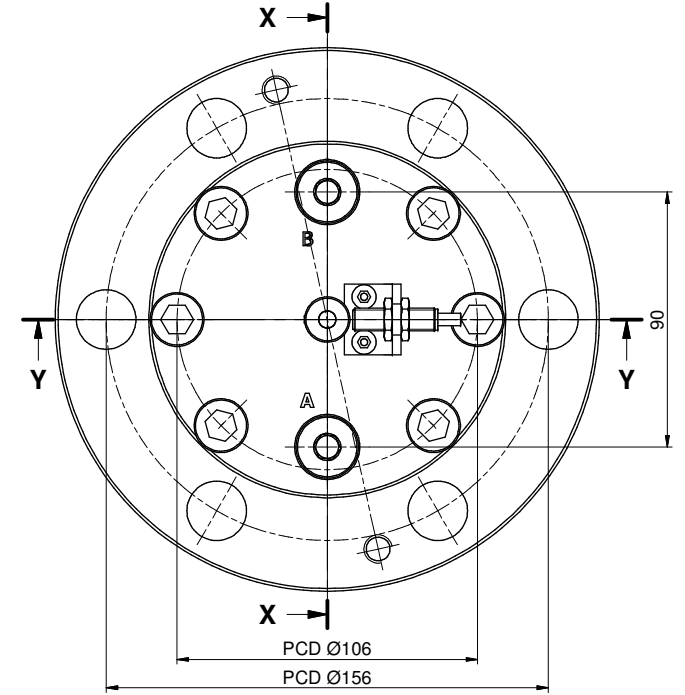
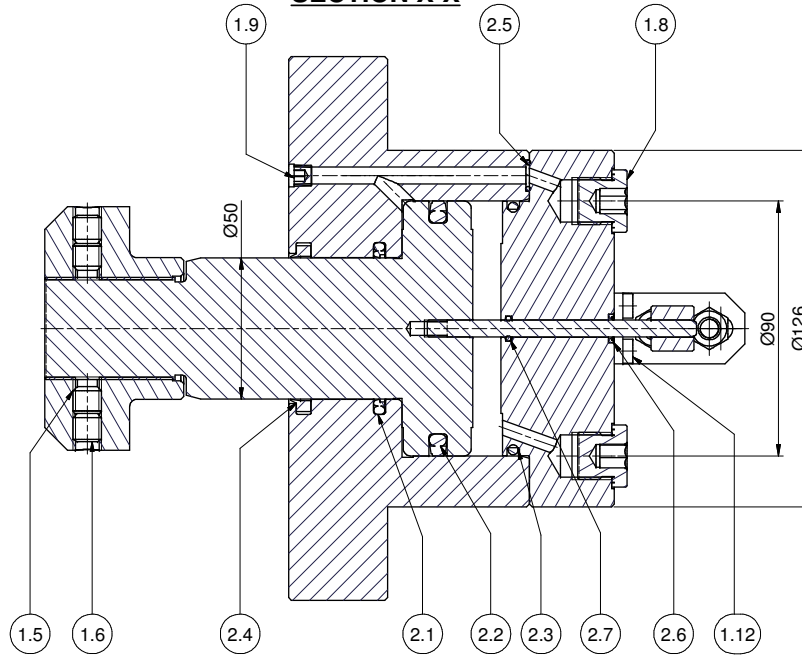


**SECTION X-X**



Parts List			
ITEM	QTY	PART NUMBER	DESCRIPTION
1	1	MPR141-P-99	COMMON PARTS
1.1	1	DQ1151-005	BASE
1.2	1	DQ1152-040	PLUNGER
1.3	1	FB430-044	STOPRING
1.4	1	DQ1154-299	CLAMP ARM
1.5	2	CCA1017-0285B	SET SCREW
1.6	2	CCA1015.028-5A	SET SCREW M10x10
1.7	6	CCA1229.028-1A	SCREW M12x40
1.8	2	CS234-006	TERMINAL PLUG
1.9	1	A1006-245	PLUG 1/16"-27 NPTF
1.10	1	CV531-061	SENSOR PIN
1.11	1	FB424-111	BRACKET
1.12	2	CBA515.028-1D	SCREW M5x10
1.13	1	FB422-039	SENSOR BUSH I.D.6
1.14	1	CCA407-0285A	SCREW M4x4
1.15	(*)	FB419-372	PROX. SWITCH
2	1	MPR141-P-77V	SEAL KIT (VITON)
2.1	1	FB91-041	STEPSEAL
2.2	1	FB92-041	GLYDRING + O-RING
2.3	1	B1236-203	O-RING
2.4	1	DQ1116-776	WIPER P6
2.5	1	B1011-203	O-RING
2.6	1	PA309-776	WIPER
2.7	1	B1009-203	O-RING

SEE NOTE

NOTE: PROX. SWITCH FB419-372, NOT IN STANDARD DELIVERY AND MUST BE ORDERED SEPARATELY.

**SECTION Y-Y**

E0076A	RELEASED	04/13
EASC	CHANGES	DATE

TOLERANCES ON DIMENSIONS UNLESS SPECIFIED ± MM[inch]					TOL. ON ANGLES UNLESS SPEC.	TOL. ON RADII UNLESS SPEC. ± MM[inch]			
SIZE	0-6 [.02-.24]	6-30 [.24-1.18]	30-120 [1.18-4.72]	120-315 [4.72-12.40]	315-1000 [12.40-39.37]	SIZE	0-3	3-6	6-30
TOL.	0.1[.004]	0.2[.008]	0.3[.012]	0.5[.02]	0.8[.03]	± 1'	0.2[.008]	0.5[.02]	1[.04]
SPECIFICATIONS						DIMENSIONS IN BRACKETS ARE IN [INCH]			
WEIGHT: ± 16,145 kg						NO CHANGE, NO PROGRESS			
						3.2 FINISH UNLESS SPECIFIED $\sqrt{Ra\mu m [Ra\mu]}$			
SCALE 0.75 : 1						DESCRIPTION PULL CYLINDER 140 kN MODEL			
ALL ANGULAR DIMENSIONS ARE ± 1' UNLESS SPECIFIED						DRAWING NO. MPR141-PV			
GROUP	C.	DO NOT	DR.	DATE	DATE	Rev	9/02		
TECH.	M.	SCALE	CH.	4-7-2013	DATE	A2			
CODES		DRAWING							