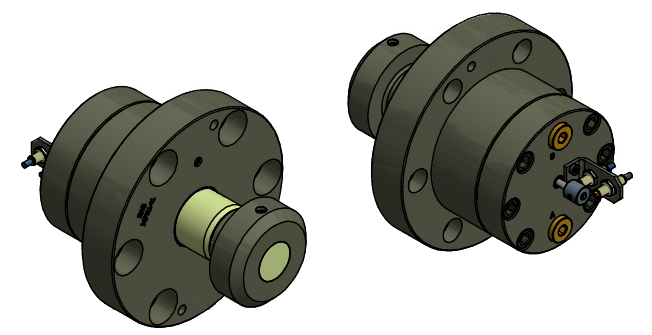
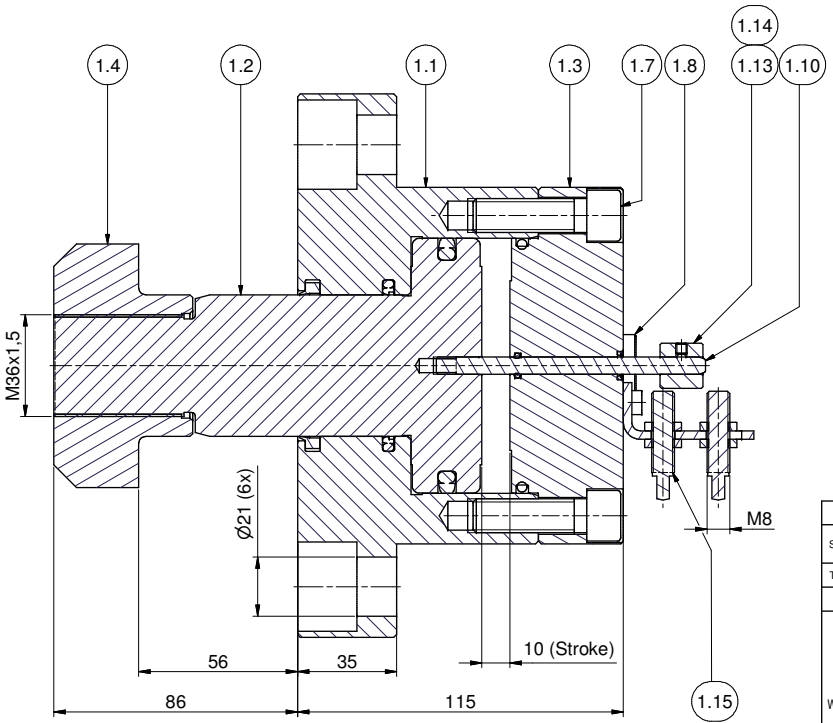
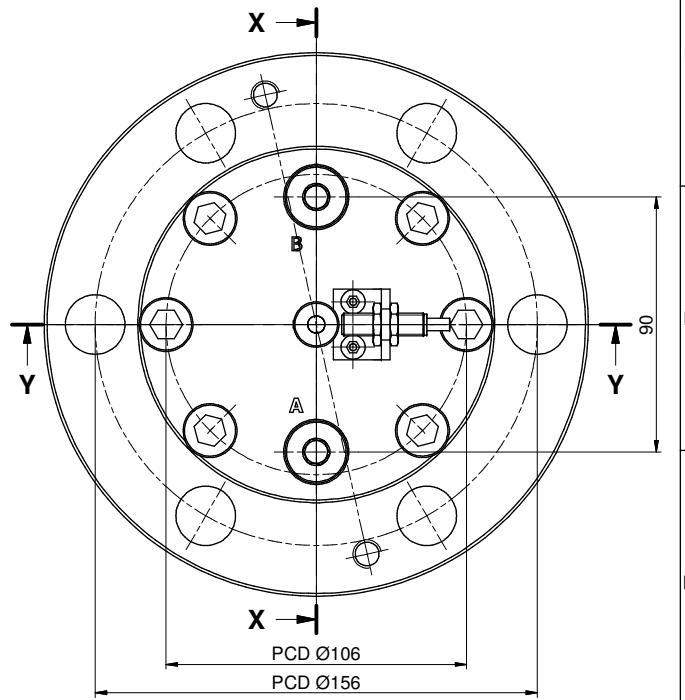
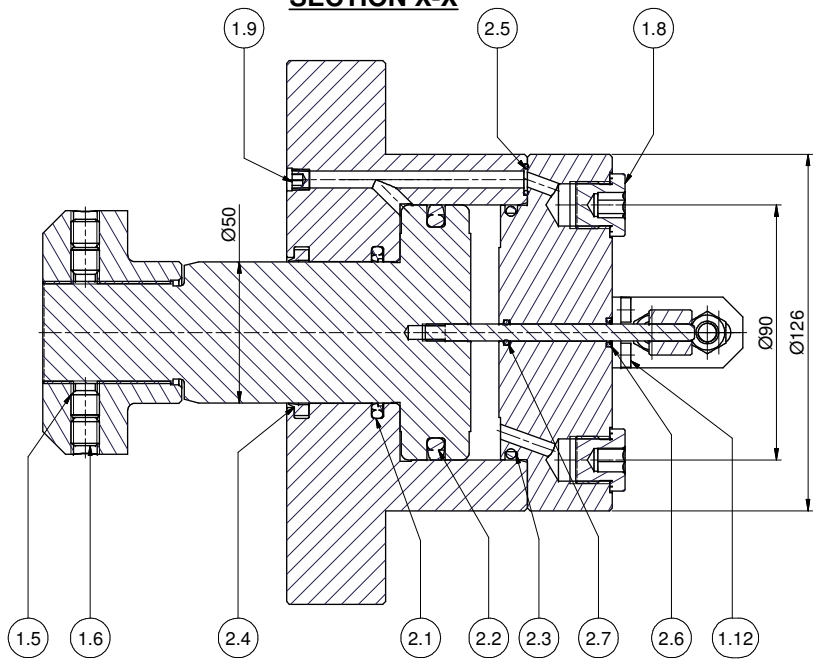


**SECTION X-X**



| Parts List |     |                |                    |
|------------|-----|----------------|--------------------|
| ITEM       | QTY | PART NUMBER    | DESCRIPTION        |
| 1          | 1   | MPR141-P-99    | COMMON PARTS       |
| 1.1        | 1   | DQ1151-005     | BASE               |
| 1.2        | 1   | DQ1152-040     | PLUNGER            |
| 1.3        | 1   | FB430-044      | STOPRING           |
| 1.4        | 1   | DQ1154-299     | CLAMP ARM          |
| 1.5        | 2   | CCA1017-0285B  | SET SCREW          |
| 1.6        | 2   | CCA1015.028-5A | SET SCREW M10x10   |
| 1.7        | 6   | CCA1229.028-1A | SCREW M12x40       |
| 1.8        | 2   | CS234-006      | TERMINAL PLUG      |
| 1.9        | 1   | A1006-245      | PLUG 1/16"-27 NPTF |
| 1.10       | 1   | CV531-061      | SENSOR PIN         |
| 1.11       | 1   | FB424-111      | BRACKET            |
| 1.12       | 2   | CBA515.028-1D  | SCREW M5x10        |
| 1.13       | 1   | FB422-039      | SENSOR BUSH I.D.6  |
| 1.14       | 1   | CCA407-0285A   | SCREW M4x4         |
| 1.15       | (*) | FB419-372      | PROX. SWITCH       |
| 2          | 1   | MPR-141-P-77   | SEAL KIT           |
| 2.1        | 1   | CS855-041      | STEPSEAL           |
| 2.2        | 1   | DQ982-041      | GLYDRING + O-RING  |
| 2.3        | 1   | B1236-903      | O-RING             |
| 2.4        | 1   | DQ1115-776     | WIPER RX 006P      |
| 2.5        | 1   | B1011-903      | O-RING             |
| 2.6        | 1   | BSS2907D       | WIPER              |
| 2.7        | 1   | B1009-803      | O-RING             |

SEE NOTE

NOTE: PROX. SWITCH FB419-372, NOT IN STANDARD DELIVERY AND MUST BE ORDERED SEPARATELY.

**SECTION Y-Y**

|   |                 |   |  |
|---|-----------------|---|--|
| E0076A  |                 | RELEASED  | 04/13                                  |
| EASC  |                 | CHANGES   | DATE                                   |
| TOLERANCES ON DIMENSIONS UNLESS SPECIFIED ± MM [inch] |                 | TOL. ON ANGLES UNLESS SPEC.                                 | TOL. ON RADII UNLESS SPEC. ± MM [inch] |
| SIZE  | 0.5-6 [0.02-24] | 6-30 [1.18-4.72]  | 120-315 [4.72-12.40]                   |
| TOL.  | 0.1 [0.004]     | 0.2 [0.008]   | 0.3 [0.012]                            |
| SPECIFICATIONS  |                 | DIMENSIONS IN BRACKETS ARE IN [INCH]                        |  |
| WEIGHT: ± 16,147 kg                                   |                 | NO CHANGE, NO PROGRESS                                      |  |
| SCALE 0.75 : 1  |                 | 3.2 FINISH UNLESS SPECIFIED $\sqrt{Ra_{\mu m}}$ [Ra $\mu$ ] |  |
| GROUP TECH. CODES                                     |                 | DO NOT SCALE DRAWING  |  |
| C. M.   |                 | DR. lodderd CH.   |  |
| DATE 4-7-2013   |                 | DATE  |  |
| DRAWING NO. MPR141-P                                  |                 | Rev 9/02  |  |
| DESCRIPTION PULL CYLINDER ASS'y 140 kN MODEL          |                 | A2  |  |