

2 CLAMPING SYSTEMS

2.7 PULL CYLINDERS SERIES MPR

Double acting, max 350 bar

Capacity: 56, 91 and 143 kN

Working pressure: 350 bar

Double acting

Temperature range: 5°C till 60°C

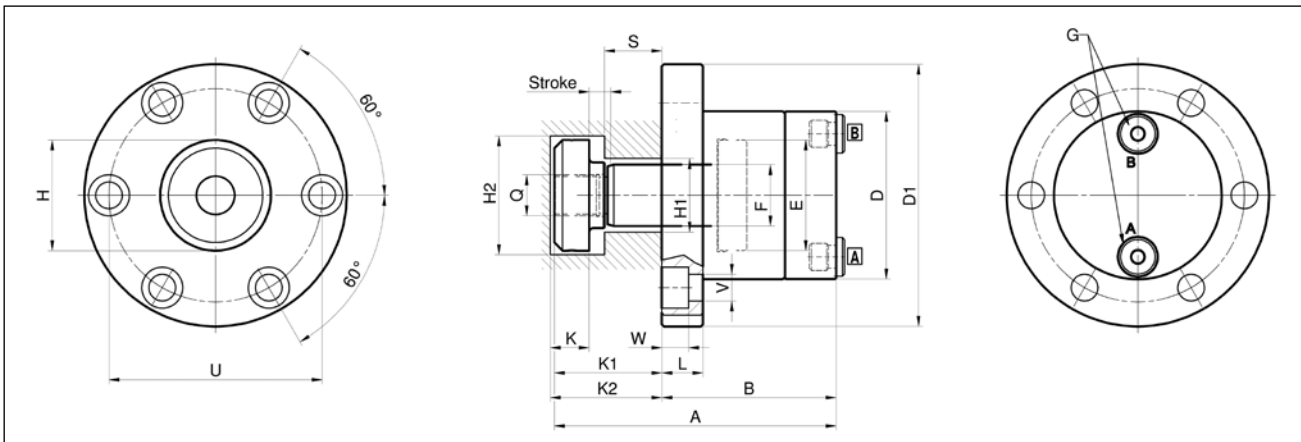
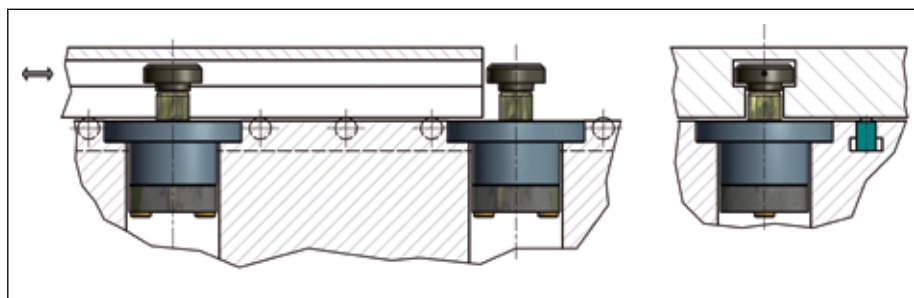
DESCRIPTION

The EAS pull cylinders are very suitable to clamp dies on press beds. In that case it is necessary to have T-slots on the dies. The die should be moved over the pullarm of the cylinder and also in the same direction of the clamps (see application drawing).

For Viton seals (max 200°C) add V behind the model number, like for example MPR 51-V

In case 2 sensors are required to determine the extended in the clamped position add suffix "P" behind the model number and order the sensors (5 m cable included).

MPR



SELECTION CHART						
EAS Model Number	Clamping force (kN)	Operating pressure (bar)	Stroke (mm)	Oil capacity (cm ³)	Oil retract capacity (cm ³)	Max flow (l/min)
MPR 51	56	350	10	16	23	2,5
MPR 91	91	350	10	26	38	8,6
MPR 141	143	350	10	41	61	15

SELECTION CHART INDUCTIVE SENSORS			
EAS Model Number	Thread	Specs	Detection distance
PSM8NOC Normally open	M8x1	10-36V, DC 100mA	2 mm

SELECTION CHART (FOLLOW UP)																			
EAS Model Number	Dimensions in mm																		
	A	B	D	D1	E	F	G	H	H1	H2	K ¹⁾	K1	K2	L	Q	S	U	V	W
MPR 51	137,5	85	82	128	54	30	G 1/4"	54	36	58	17	52,5	53	20	M20X1,5	51S*=26,5-34,5	104	13	13
MPR 91	169	100	104	160	70	40	G 3/8"	76	48	82	24	69	70	28	M30X1,5	91S*=36-44	130	17,5	17
MPR 141	201	115	126	192	90	50	G 3/8"	86	58	92	30	86	87	35	M36X1,5	141S*=47-55	156	21	21