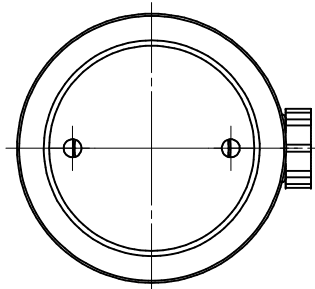


MHC-50-18-XX:

**CLAMPFORCE at 350 bar = 46,06 kN
TOTAL STROKE = 12 mm**



TOLERANCES ON DIMENSIONS UNLESS SPECIFIED \pm MM[inch]						TOL. ON ANGLES UNLESS SPEC.	TOL. ON RADII UNLESS SPEC. \pm MM[inch]				
SIZE	0.5-6 [.02-.24]	6-30 [.24-1.18]	30-120 [1.18-4.72]	120-315 [4.72-12.40]	315-1000 [12.40-39.37]		SIZE	0.5-3 [.02-.12]	3-6 [.12-.24]	6-30 [.24-1.18]	
TOL.	0.1 [.004]	0.2 [.008]	0.3 [.012]	0.5 [.02]	0.8 [.03]	$\pm 1^\circ$	TOL.	0.2 [.008]	0.5 [.02]	1 [.04]	
SPECIFICATIONS						DIMENSIONS IN BRACKETS ARE IN [INCH]					
WEIGHT: ± 1.644 kg						NO CHANGE, NO PROGRESS					
						3,2 $\sqrt{Ra\mu m}$ [Ra μ]					
ALL ANGULAR DIMENSIONS ARE $\pm 1^\circ$ UNLESS SPECIFIED						SCALE	DESCRIPTION				
						1 : 1.25	T-SLOT PULL CYLINDER MHC50-18-XX				
GROUP	C.					DO NOT	DR.	DATE	DRAWING NO.	Rev	9/02
TECH.	M.					SCALE	Yue	2020/4/9	MHC50-18-XX		
CODES						DRAWING	CH.	DATE			A3