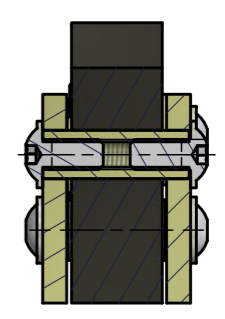
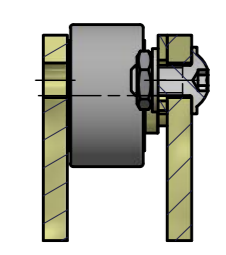



**SECTION X-X ( 1 : 2.5 )**

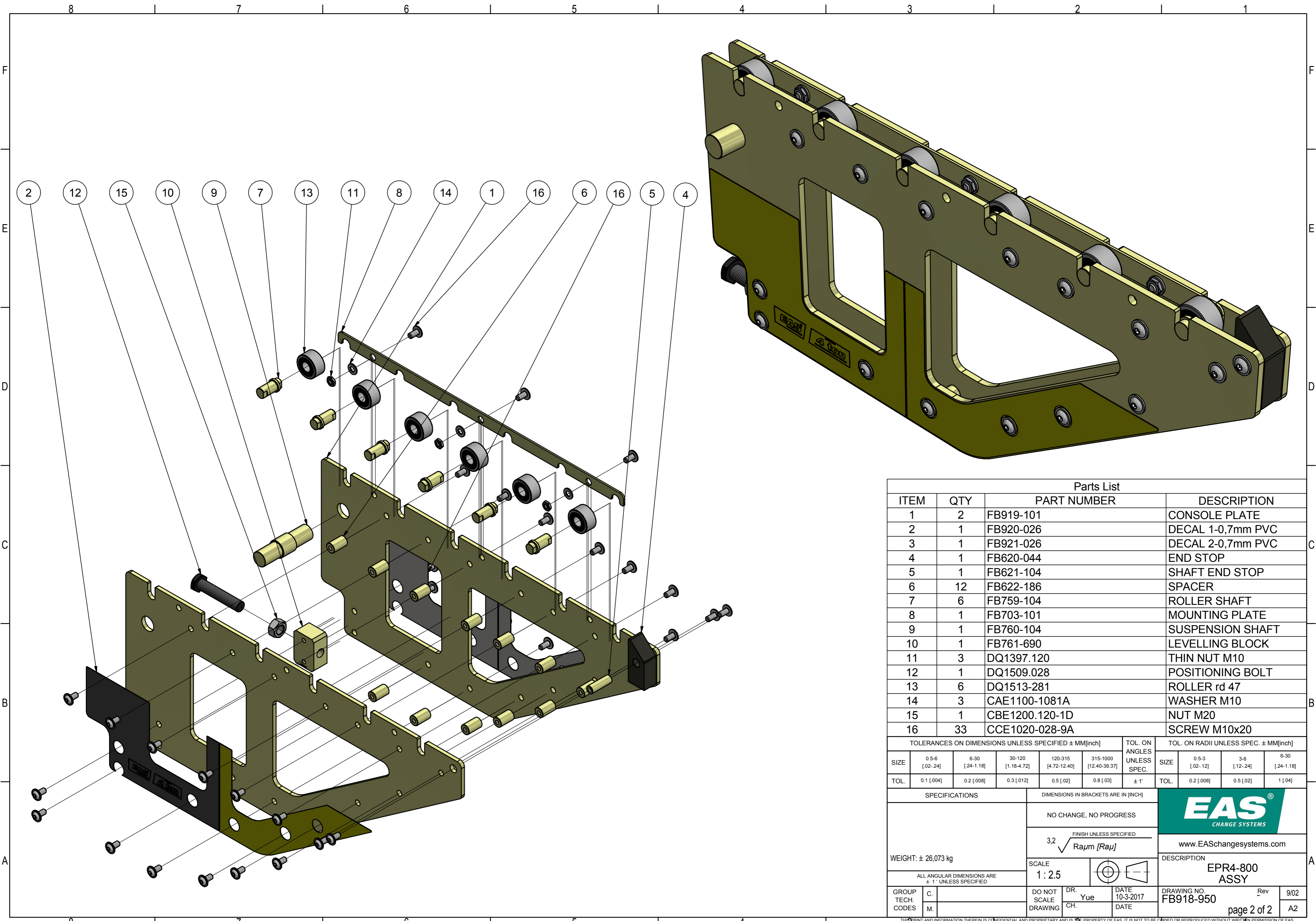


**SECTION Y-Y ( 1 : 2.5 )**



**SECTION Z-Z ( 1 : 2.5 )**

REVISION HISTORY EAS											
REV	ECO	DESCRIPTION				DATE	APPROVED				
-	E0105	RELEASED ACC. ECO				2017/11/27	welgravenj				
TOLERANCES ON DIMENSIONS UNLESS SPECIFIED ± MM[inch]						TOL. ON ANGLES UNLESS SPEC.		TOL. ON RADII UNLESS SPEC. ± MM[inch]			
SIZE	0.5-6 [.02-.24]	6-30 [.24-1.18]	30-120 [1.18-4.72]	120-315 [4.72-12.40]	315-1000 [12.40-39.37]	SIZE	0.5-3 [.02-.12]	3-6 [.12-.24]	6-30 [.24-1.18]		
TOL.	0.1 [.004]	0.2 [.008]	0.3 [.012]	0.5 [.02]	0.8 [.03]	± 1'	TOL.	0.2 [.008]	0.5 [.02]	1 [.04]	
SPECIFICATIONS			DIMENSIONS IN BRACKETS ARE IN [INCH]				 www.EASchangesystems.com				
			NO CHANGE, NO PROGRESS								
			3,2 $\sqrt{Ra\mu m}$ [Raμ]								
WEIGHT: ± 26,073 kg			SCALE		1 : 2.5		DESCRIPTION		EPR4-800 ASSY		
ALL ANGULAR DIMENSIONS ARE ± 1' UNLESS SPECIFIED			DO NOT SCALE DRAWING		DR. Yue		DATE 10-3-2017		DRAWING NO. FB918-950		
GROUP TECH. CODES			C. M.		CH.		DATE		Rev 9/02		
									page 1 of 2 A2		



Parts List											
ITEM	QTY	PART NUMBER				DESCRIPTION					
1	2	FB919-101				CONSOLE PLATE					
2	1	FB920-026				DECAL 1-0,7mm PVC					
3	1	FB921-026				DECAL 2-0,7mm PVC					
4	1	FB620-044				END STOP					
5	1	FB621-104				SHAFT END STOP					
6	12	FB622-186				SPACER					
7	6	FB759-104				ROLLER SHAFT					
8	1	FB703-101				MOUNTING PLATE					
9	1	FB760-104				SUSPENSION SHAFT					
10	1	FB761-690				LEVELLING BLOCK					
11	3	DQ1397.120				THIN NUT M10					
12	1	DQ1509.028				POSITIONING BOLT					
13	6	DQ1513-281				ROLLER rd 47					
14	3	CAE1100-1081A				WASHER M10					
15	1	CBE1200.120-1D				NUT M20					
16	33	CCE1020-028-9A				SCREW M10x20					

TOLERANCES ON DIMENSIONS UNLESS SPECIFIED ± MM[inch]						TOL. ON ANGLES UNLESS SPEC.		TOL. ON RADII UNLESS SPEC. ± MM[inch]			
SIZE	0.5-6 [02-24]	6-30 [24-1.18]	30-120 [1.18-4.72]	120-315 [4.72-12.40]	315-1000 [12.40-39.37]	± 1'	SIZE	0.5-3 [02-12]	3-6 [12-24]	6-30 [24-1.18]	
TOL.	0.1 [004]	0.2 [008]	0.3 [012]	0.5 [02]	0.8 [03]		TOL.	0.2 [008]	0.5 [02]	1 [04]	

SPECIFICATIONS		DIMENSIONS IN BRACKETS ARE IN [INCH]		
NO CHANGE, NO PROGRESS		FINISH UNLESS SPECIFIED		
3,2 $\sqrt{Ra\mu m [Ra\mu]}$		SCALE 1:2.5		
WEIGHT: ± 26,073 kg		ALL ANGULAR DIMENSIONS ARE ± 1' UNLESS SPECIFIED		DESCRIPTION
				EPR4-800 ASSY
GROUP TECH. CODES	C. M.	DO NOT SCALE DRAWING	DR. Yue CH.	DATE 10-3-2017 DATE
				DRAWING NO. FB918-950 Rev 9/02

page 2 of 2

THIS PRINT AND INFORMATION THEREIN IS CONFIDENTIAL AND PROPRIETARY AND IS THE PROPERTY OF EAS. IT IS NOT TO BE COPIED OR REPRODUCED WITHOUT WRITTEN PERMISSION OF EAS.