
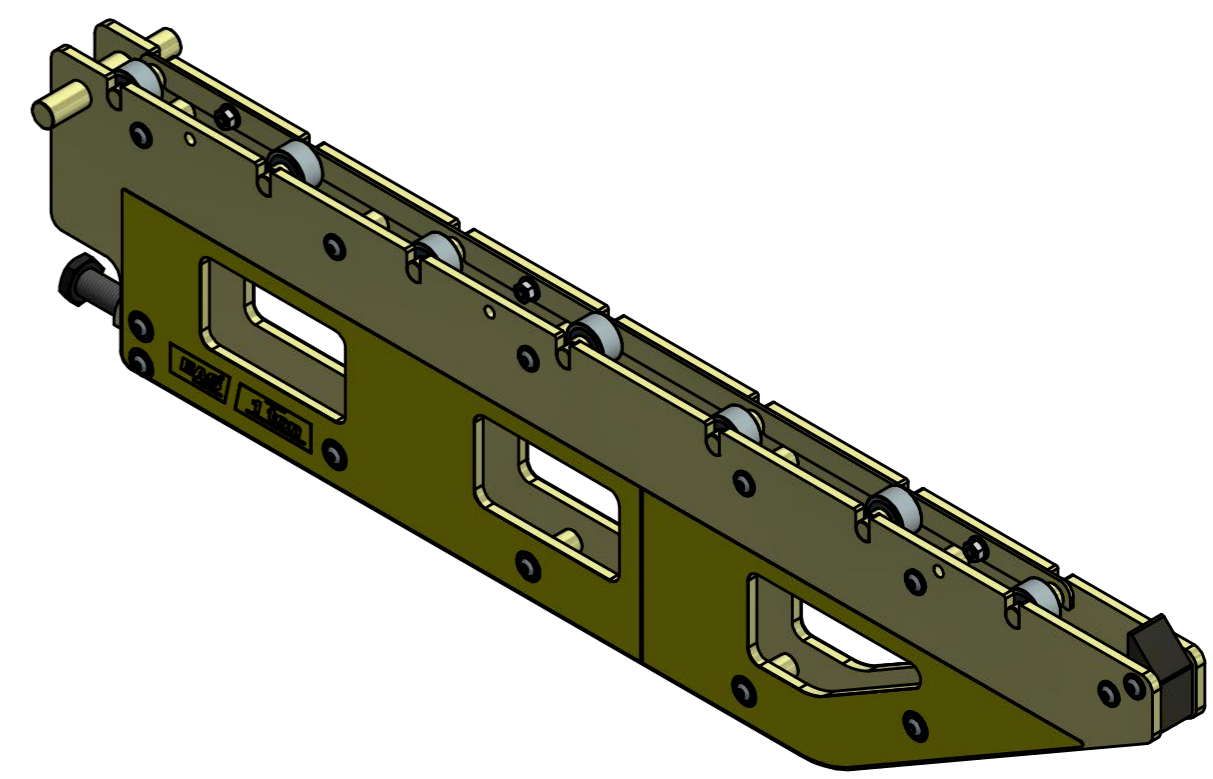
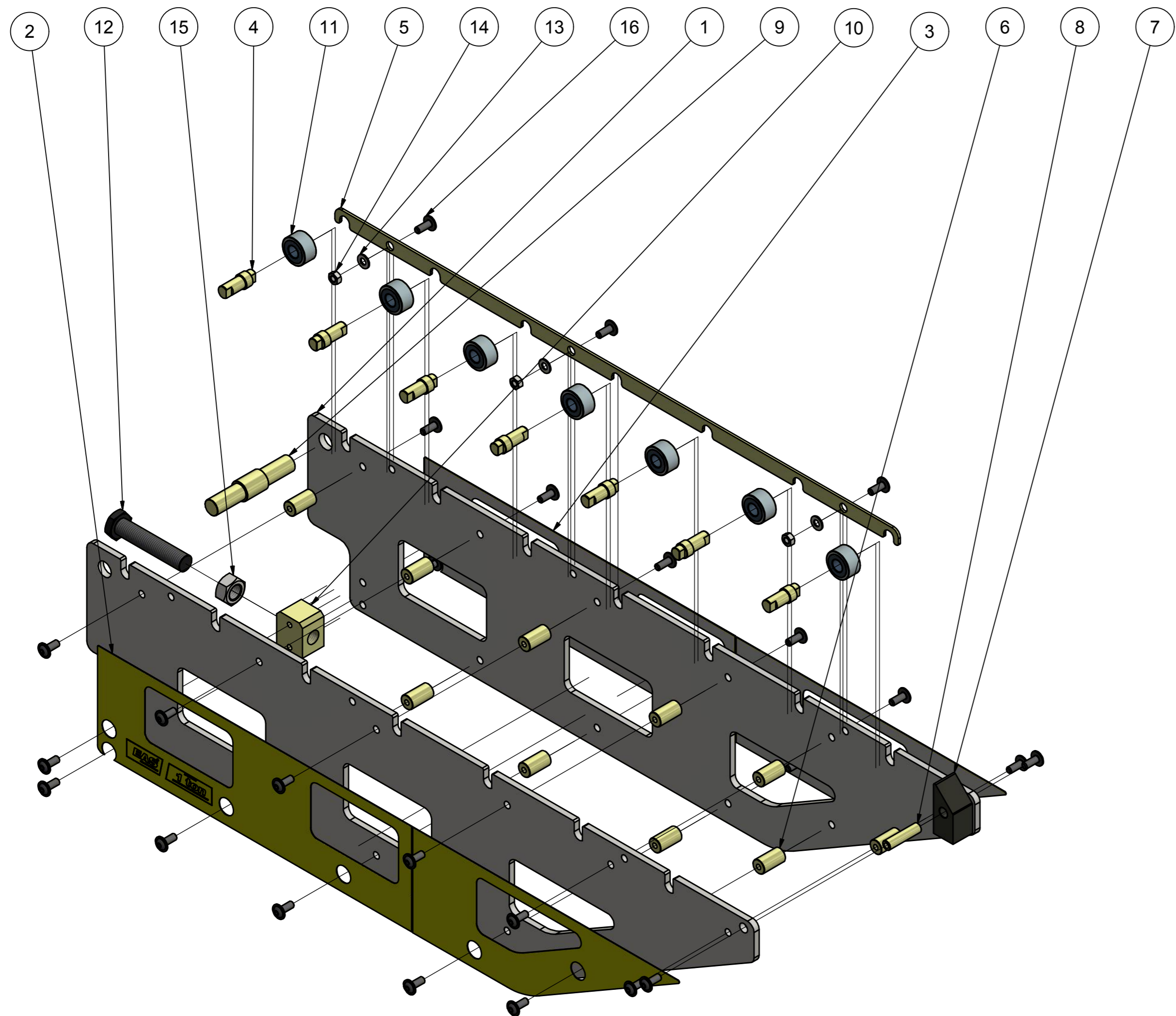


SECTION X-X (1 : 5)

SECTION Y-Y (1 : 5)

SECTION Z-Z (1 : 5)

REVISION HISTORY EAS										
REV	ECO	DESCRIPTION			DATE	APPROVED				
-	E0105	RELEASED ACC. ECO			2017/11/24	welgravenj				
TOLERANCES ON DIMENSIONS UNLESS SPECIFIED ± MM[inch]					TOL. ON ANGLES UNLESS SPEC.	TOL. ON RADII UNLESS SPEC. ± MM[inch]				
SIZE	0.5-6 [.02-.24]	6-30 [.24-1.18]	30-120 [1.18-4.72]	120-315 [4.72-12.40]	315-1000 [12.40-39.37]	± 1°	SIZE	0.5-3 [.02-.12]	3-6 [.12-.24]	6-30 [.24-1.18]
TOL.	0.1 [.004]	0.2 [.008]	0.3 [.012]	0.5 [.02]	0.8 [.03]	± 1°	TOL.	0.2 [.008]	0.5 [.02]	1 [.04]
SPECIFICATIONS					DIMENSIONS IN BRACKETS ARE IN [INCH]					
WEIGHT: ± 25,961 kg					NO CHANGE, NO PROGRESS					
					3,2 $\sqrt{Ra\mu m [Ra\mu]}$ FINISH UNLESS SPECIFIED					
					SCALE 1:5					
ALL ANGULAR DIMENSIONS ARE ± 1° UNLESS SPECIFIED										
GROUP TECH. CODES: C. M. DO NOT SCALE DRAWING					DR. Yue		DATE 15-2-2017		DESCRIPTION	
					CH.		DATE		www.EASchangesystems.com EPR1-1000 ASSY	
					DRAWING NO. FB904-950		Rev 9/02		A3	



Parts List											
ITEM	QTY	PART NUMBER				DESCRIPTION					
1	2	FB905-101				CONSOLE PLATE					
2	1	FB906-026				DECAL 1-0,7mm PVC					
3	1	FB907-026				DECAL 2-0,7mm PVC					
4	7	FB627-104				ROLLER SHAFT					
5	1	FB669-101				MOUNTING PLATE					
6	10	FB751-186				SPACER					
7	1	FB754-044				END STOP					
8	1	FB755-104				SHAFT END STOP					
9	1	FB756-104				SUSPENSION SHAFT					
10	1	FB757-690				LEVELLING BLOCK					
11	7	DQ1504-281				ROLLER					
12	1	DQ1509.028				POSITIONING BOLT					
13	3	CAE1080-1081A				WASHER M8					
14	3	CBB1080-1201D				NUT M8					
15	1	CBE1200.120-1D				NUT M20					
16	29	CCE820-028-9A				SCREW M8x20					

TOLERANCES ON DIMENSIONS UNLESS SPECIFIED ± MM[inch]					TOL. ON ANGLES UNLESS SPEC.	TOL. ON RADII UNLESS SPEC. ± MM[inch]				
SIZE	0.5-6 [02-24]	6-30 [24-1.18]	30-120 [1.18-4.72]	120-315 [4.72-12.40]	315-1000 [12.40-39.37]	SIZE	0.5-3 [02-12]	3-6 [12-24]	6-30 [24-1.18]	
TOL.	0.1 [004]	0.2 [008]	0.3 [012]	0.5 [02]	0.8 [03]	± 1'	TOL.	0.2 [008]	0.5 [02]	1 [04]

SPECIFICATIONS		DIMENSIONS IN BRACKETS ARE IN [INCH]		
WEIGHT: ± 25,961 kg		NO CHANGE, NO PROGRESS		
ALL ANGULAR DIMENSIONS ARE ± 1' UNLESS SPECIFIED		FINISH UNLESS SPECIFIED $3,2 \sqrt{Ra_{\mu m}} [Ra_{\mu}]$		
GROUP TECH. CODES	C. M.	DO NOT SCALE DRAWING	DR. Yue CH.	DATE 15-2-2017 DATE
		SCALE 1:5		DESCRIPTION EPR1-1000 ASSY
				DRAWING NO. FB904-950 Rev 9/02