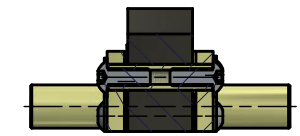
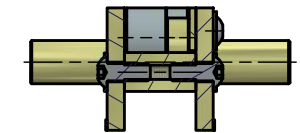


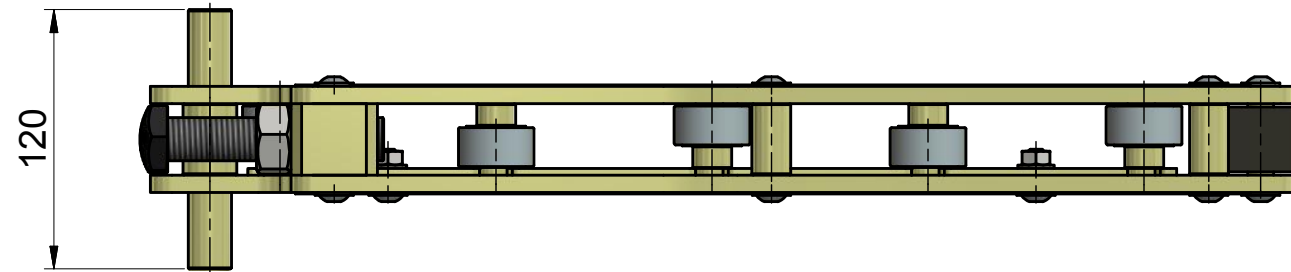
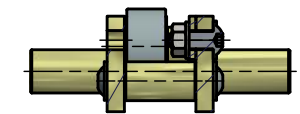
**SECTION X-X ( 1 : 3.5 )**


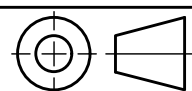


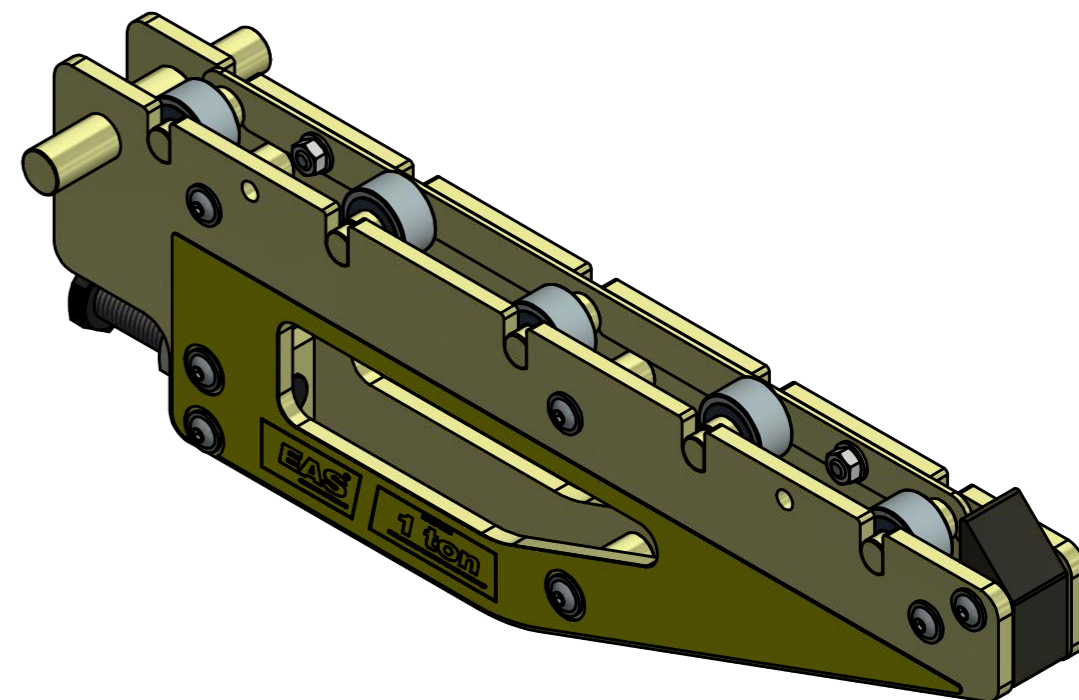
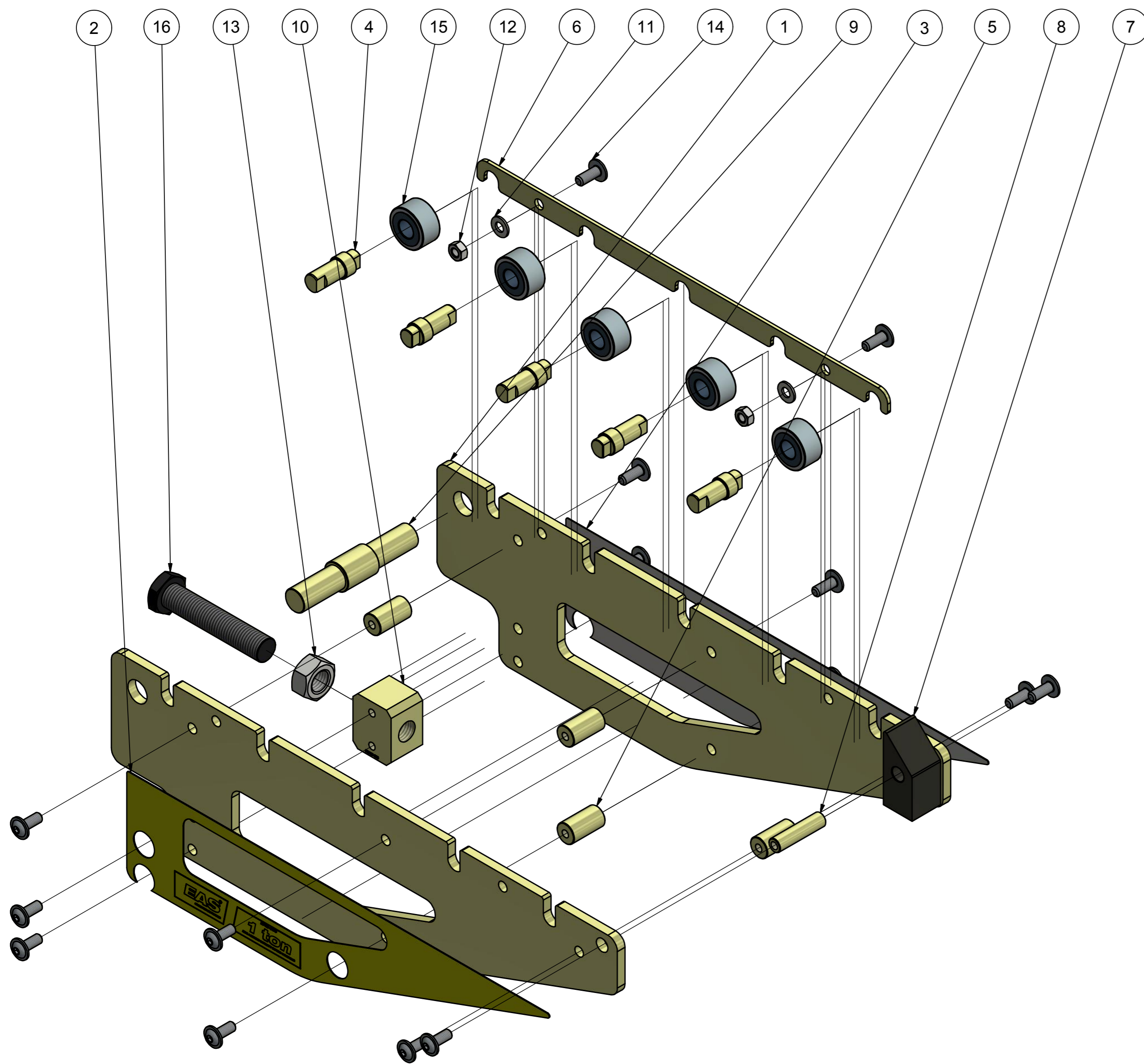
**SECTION Y-Y ( 1 : 3.5 )**



**SECTION Z-Z ( 1 : 3.5 )**



REVISION HISTORY EAS										
REV	ECO		DESCRIPTION			DATE	APPROVED			
-	E0105		RELEASED ACC. ECO			2017/11/24	welgravenj			
TOLERANCES ON DIMENSIONS UNLESS SPECIFIED ± MM[inch]						TOL. ON ANGLES UNLESS SPEC.	TOL. ON RADII UNLESS SPEC. ± MM[inch]			
SIZE	0.5-6 [.02-.24]	6-30 [.24-1.18]	30-120 [1.18-4.72]	120-315 [4.72-12.40]	315-1000 [12.40-39.37]		SIZE	0.5-3 [.02-.12]	3-6 [.12-.24]	6-30 [.24-1.18]
TOL.	0.1 [.004]	0.2 [.008]	0.3 [.012]	0.5 [.02]	0.8 [.03]	± 1'	TOL.	0.2 [.008]	0.5 [.02]	1 [.04]
SPECIFICATIONS					DIMENSIONS IN BRACKETS ARE IN [INCH]			 www.EASchangesystems.com		
WEIGHT: ± 9,625 kg					NO CHANGE, NO PROGRESS					
					3,2 $\sqrt{Ra\mu m [Ra\mu]}$ FINISH UNLESS SPECIFIED					
ALL ANGULAR DIMENSIONS ARE ± 1' UNLESS SPECIFIED					SCALE			DESCRIPTION		
					1 : 3.5			EPR1-500 ASSY		
GROUP	C.				DO NOT SCALE DRAWING	DR. Yue	DATE 9-2-2017	DRAWING NO. FB896-950	Rev 9/02	
TECH. CODES	M.					CH.	DATE		A3	



Parts List											
ITEM	QTY	PART NUMBER				DESCRIPTION					
1	2	FB897-101				CONSOLE PLATE					
2	1	FB898-026				DECAL 1-0,7mm PVC					
3	1	FB899-026				DECAL 2-0,7mm PVC					
4	5	FB627-104				ROLLER SHAFT					
5	4	FB751-186				SPACER					
6	1	FB752-101				MOUNTING PLATE					
7	1	FB754-044				END STOP					
8	1	FB755-104				SHAFT END STOP					
9	1	FB756-104				SUSPENSION SHAFT					
10	1	FB757-690				LEVELLING BLOCK					
11	2	CAE1080-1081A				WASHER M8					
12	2	CBB1080-1201D				NUT M8					
13	1	CBE1200.120-1D				NUT M20					
14	16	CCE820-028-9A				SCREW M8x20					
15	5	DQ1504-281				ROLLER					
16	1	DQ1509.028				POSITIONING BOLT					
TOLERANCES ON DIMENSIONS UNLESS SPECIFIED ± MM[inch]						TOL. ON ANGLES UNLESS SPEC.	TOL. ON RADII UNLESS SPEC. ± MM[inch]				
SIZE	0.5-6 [02-24]	6-30 [24-1.18]	30-120 [1.18-4.72]	120-315 [4.72-12.40]	315-1000 [12.40-39.37]	SIZE	0.5-3 [02-12]	3-6 [12-24]	6-30 [24-1.18]		
TOL.	0.1 [004]	0.2 [008]	0.3 [012]	0.5 [02]	0.8 [03]	± 1'	TOL.	0.2 [008]	0.5 [02]	1 [04]	
SPECIFICATIONS			DIMENSIONS IN BRACKETS ARE IN [INCH]								
NO CHANGE, NO PROGRESS			FINISH UNLESS SPECIFIED								
3,2 $\sqrt{Ra\mu m [Ra\mu]}$			SCALE								
WEIGHT: ± 9,625 kg			SCALE 1:3.5			DESCRIPTION					
ALL ANGULAR DIMENSIONS ARE ± 1' UNLESS SPECIFIED			DO NOT SCALE DRAWING			EPR1-500 ASSY					
GROUP TECH. CODES	C.	M.			DR. Yue	DATE 9-2-2017	DRAWING NO. FB896-950				
			CH.			DATE	Rev 9/02				