
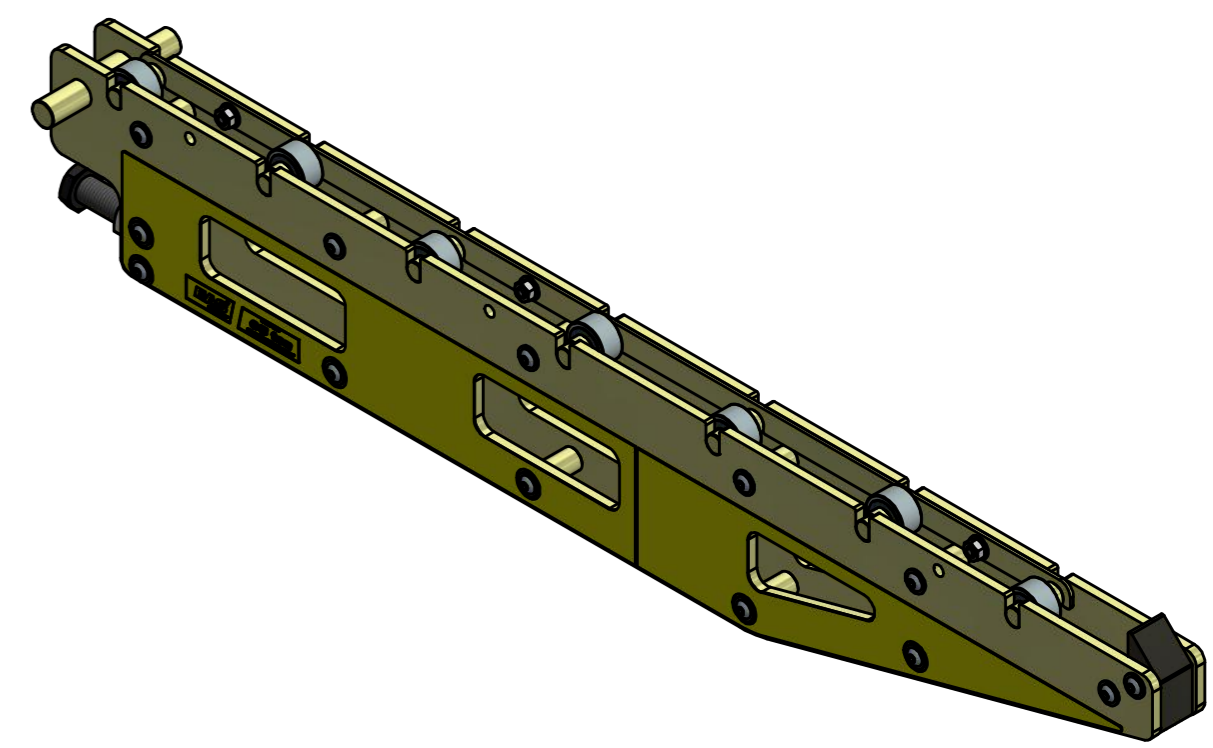
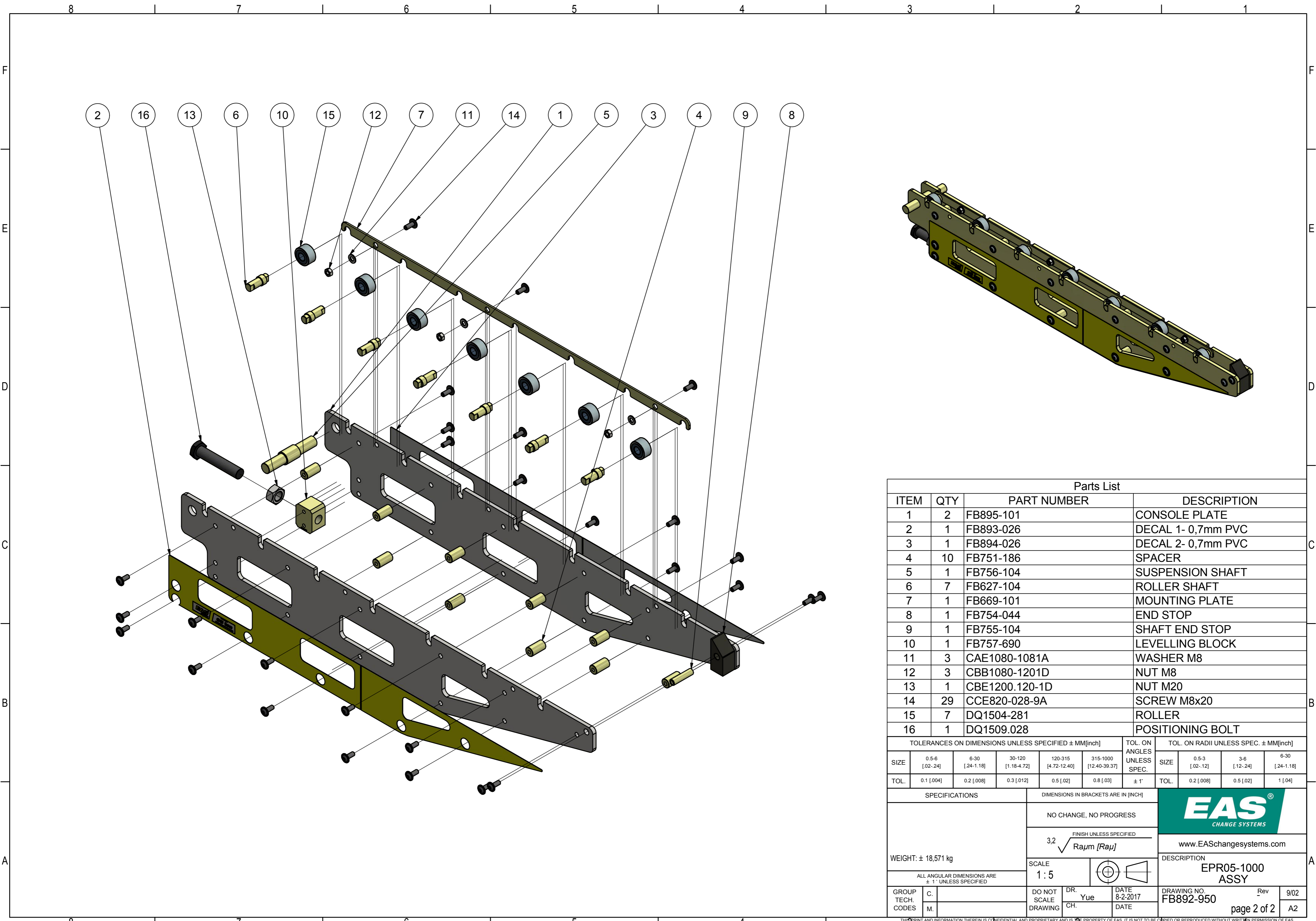


REVISION HISTORY EAS										
REV	ECO		DESCRIPTION			DATE	APPROVED			
-	E0105		RELEASED ACC. ECO			2017/11/27	welgravenj			
TOLERANCES ON DIMENSIONS UNLESS SPECIFIED ± MM[inch]						TOL. ON ANGLES UNLESS SPEC.	TOL. ON RADII UNLESS SPEC. ± MM[inch]			
SIZE	0.5-6 [.02-.24]	6-30 [.24-1.18]	30-120 [1.18-4.72]	120-315 [4.72-12.40]	315-1000 [12.40-39.37]		SIZE	0.5-3 [.02-.12]	3-6 [.12-.24]	6-30 [.24-1.18]
TOL.	0.1 [.004]	0.2 [.008]	0.3 [.012]	0.5 [.02]	0.8 [.03]	± 1'	TOL.	0.2 [.008]	0.5 [.02]	1 [.04]
SPECIFICATIONS					DIMENSIONS IN BRACKETS ARE IN [INCH]					
WEIGHT: ± 18,571 kg					NO CHANGE, NO PROGRESS					
					3.2 $\sqrt{Ra\mu m [Ra\mu]}$ FINISH UNLESS SPECIFIED					
					SCALE 1:5					
ALL ANGULAR DIMENSIONS ARE ± 1' UNLESS SPECIFIED										
GROUP TECH. CODES: C. M. DO NOT SCALE DRAWING: DR. CH.					DATE: 8-2-2017 DR. Yue DATE:		DESCRIPTION: EPR05-1000 ASSY DRAWING NO. FB892-950 www.EASchangesystems.com			
					DATE: 8-2-2017 DATE:		Rev 9/02 page 1 of 2 A3			



Parts List											
ITEM	QTY	PART NUMBER			DESCRIPTION						
1	2	FB895-101			CONSOLE PLATE						
2	1	FB893-026			DECAL 1- 0,7mm PVC						
3	1	FB894-026			DECAL 2- 0,7mm PVC						
4	10	FB751-186			SPACER						
5	1	FB756-104			SUSPENSION SHAFT						
6	7	FB627-104			ROLLER SHAFT						
7	1	FB669-101			MOUNTING PLATE						
8	1	FB754-044			END STOP						
9	1	FB755-104			SHAFT END STOP						
10	1	FB757-690			LEVELLING BLOCK						
11	3	CAE1080-1081A			WASHER M8						
12	3	CBB1080-1201D			NUT M8						
13	1	CBE1200.120-1D			NUT M20						
14	29	CCE820-028-9A			SCREW M8x20						
15	7	DQ1504-281			ROLLER						
16	1	DQ1509.028			POSITIONING BOLT						

TOLERANCES ON DIMENSIONS UNLESS SPECIFIED ± MM[inch]					TOL. ON ANGLES UNLESS SPEC.	TOL. ON RADII UNLESS SPEC. ± MM[inch]				
SIZE	0.5-6 [02-24]	6-30 [24-1.18]	30-120 [1.18-4.72]	120-315 [4.72-12.40]	315-1000 [12.40-39.37]	SIZE	0.5-3 [02-12]	3-6 [12-24]	6-30 [24-1.18]	
TOL.	0.1 [004]	0.2 [008]	0.3 [012]	0.5 [02]	0.8 [03]	± 1'	TOL.	0.2 [008]	0.5 [02]	1 [04]

SPECIFICATIONS		DIMENSIONS IN BRACKETS ARE IN [INCH]		
WEIGHT: ± 18,571 kg		NO CHANGE, NO PROGRESS		
ALL ANGULAR DIMENSIONS ARE ± 1' UNLESS SPECIFIED		FINISH UNLESS SPECIFIED $3,2 \sqrt{Ra\mu m [Ra\mu]}$		
SCALE 1:5				www.EASchangesystems.com DESCRIPTION EPR05-1000 ASSY
GROUP TECH. CODES	C. M.	DO NOT SCALE DRAWING	DR. Yue CH.	DATE 8-2-2017 DATE
			DRAWING NO. FB892-950	Rev 9/02 A2