

SECTION X-X (1 : 4)

SECTION Y-Y (1 : 4)

SECTION Z-Z (1 : 4)

REVISION HISTORY EAS										
REV	ECO		DESCRIPTION			DATE	APPROVED			
-	E0105		RELEASED ACC. ECO			2017/11/27	welgravenj			
TOLERANCES ON DIMENSIONS UNLESS SPECIFIED ± MM[inch]						TOL. ON ANGLES UNLESS SPEC.	TOL. ON RADII UNLESS SPEC. ± MM[inch]			
SIZE	0.5-6 [.02-.24]	6-30 [.24-1.18]	30-120 [1.18-4.72]	120-315 [4.72-12.40]	315-1000 [12.40-39.37]		SIZE	0.5-3 [.02-.12]	3-6 [.12-.24]	6-30 [.24-1.18]
TOL.	0.1 [.004]	0.2 [.008]	0.3 [.012]	0.5 [.02]	0.8 [.03]	± 1'	TOL.	0.2 [.008]	0.5 [.02]	1 [.04]
SPECIFICATIONS					DIMENSIONS IN BRACKETS ARE IN [INCH]					
WEIGHT: ± 14,278 kg					NO CHANGE, NO PROGRESS					
					3,2 $\sqrt{Ra\mu m [Ra\mu]}$ FINISH UNLESS SPECIFIED					
					SCALE 1:4					
ALL ANGULAR DIMENSIONS ARE ± 1' UNLESS SPECIFIED					DESCRIPTION CONSOLE ASSY EPR05-800					
GROUP	C.				DO NOT SCALE DRAWING	DR. Yue	DATE 16-1-2017	DRAWING NO. FB889-950		Rev 9/02
TECH. CODES	M.					CH.	DATE	page 1 of 2		A3

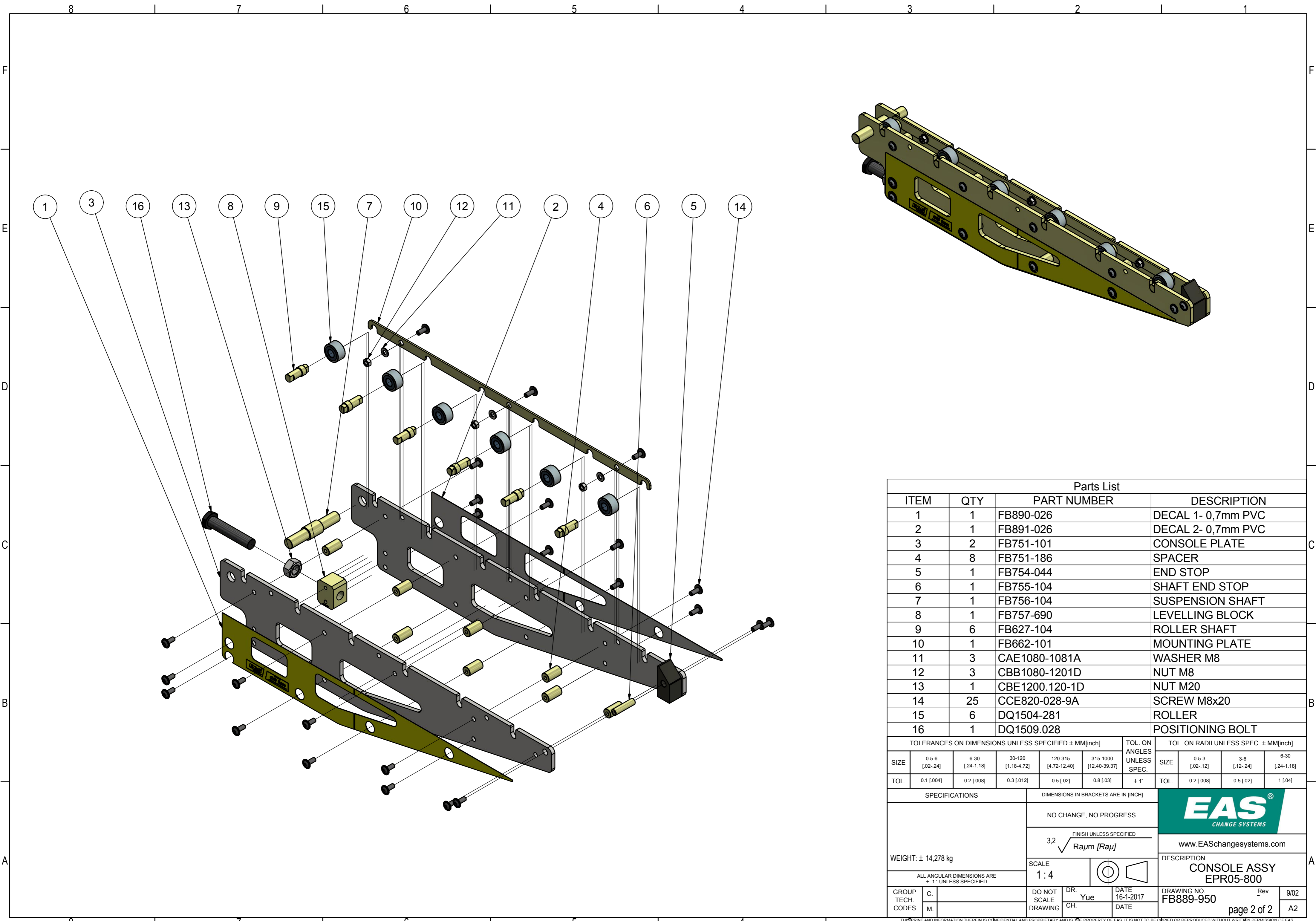


www.EASchangesystems.com

DESCRIPTION
**CONSOLE ASSY
EPR05-800**

DRAWING NO. FB889-950

page 1 of 2



Parts List									
ITEM	QTY	PART NUMBER			DESCRIPTION				
1	1	FB890-026			DECAL 1- 0,7mm PVC				
2	1	FB891-026			DECAL 2- 0,7mm PVC				
3	2	FB751-101			CONSOLE PLATE				
4	8	FB751-186			SPACER				
5	1	FB754-044			END STOP				
6	1	FB755-104			SHAFT END STOP				
7	1	FB756-104			SUSPENSION SHAFT				
8	1	FB757-690			LEVELLING BLOCK				
9	6	FB627-104			ROLLER SHAFT				
10	1	FB662-101			MOUNTING PLATE				
11	3	CAE1080-1081A			WASHER M8				
12	3	CBB1080-1201D			NUT M8				
13	1	CBE1200.120-1D			NUT M20				
14	25	CCE820-028-9A			SCREW M8x20				
15	6	DQ1504-281			ROLLER				
16	1	DQ1509.028			POSITIONING BOLT				

TOLERANCES ON DIMENSIONS UNLESS SPECIFIED ± MM[inch]					TOL. ON ANGLES UNLESS SPEC.	TOL. ON RADII UNLESS SPEC. ± MM[inch]				
SIZE	0.5-6 [02-24]	6-30 [24-1.18]	30-120 [1.18-4.72]	120-315 [4.72-12.40]	315-1000 [12.40-39.37]	SIZE	0.5-3 [02-12]	3-6 [12-24]	6-30 [24-1.18]	
TOL.	0.1 [004]	0.2 [008]	0.3 [012]	0.5 [02]	0.8 [03]	± 1'	TOL.	0.2 [008]	0.5 [02]	1 [04]

SPECIFICATIONS		DIMENSIONS IN BRACKETS ARE IN [INCH]		
WEIGHT: ± 14,278 kg		NO CHANGE, NO PROGRESS		
ALL ANGULAR DIMENSIONS ARE ± 1' UNLESS SPECIFIED		FINISH UNLESS SPECIFIED $3,2 \sqrt{Ra} \mu\text{m} [Ra\mu]$		
SCALE 1:4				www.EASchangesystems.com DESCRIPTION CONSOLE ASSY EPR05-800
GROUP TECH. CODES	C. M.	DO NOT SCALE DRAWING	DR. Yue CH.	DATE 16-1-2017 DATE
				DRAWING NO. FB889-950 Rev 9/02 page 2 of 2 A2