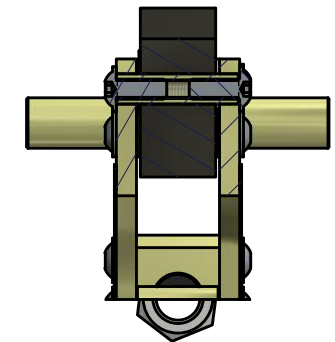
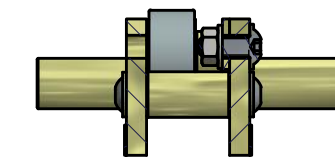


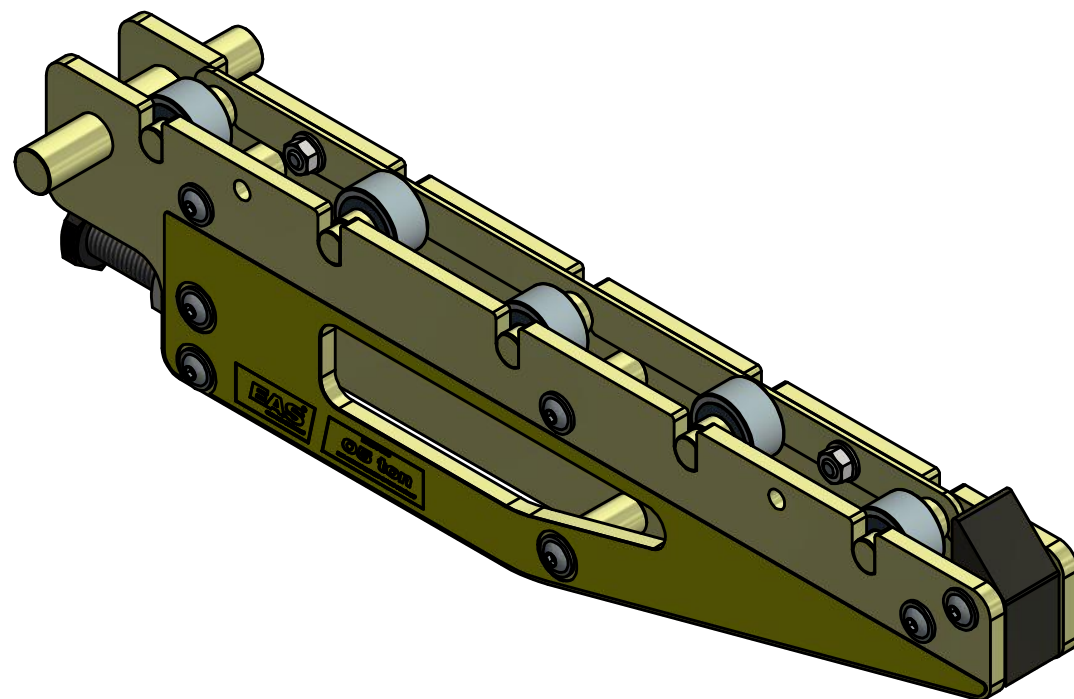
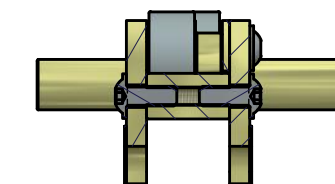
SECTION X-X



SECTION Y-Y



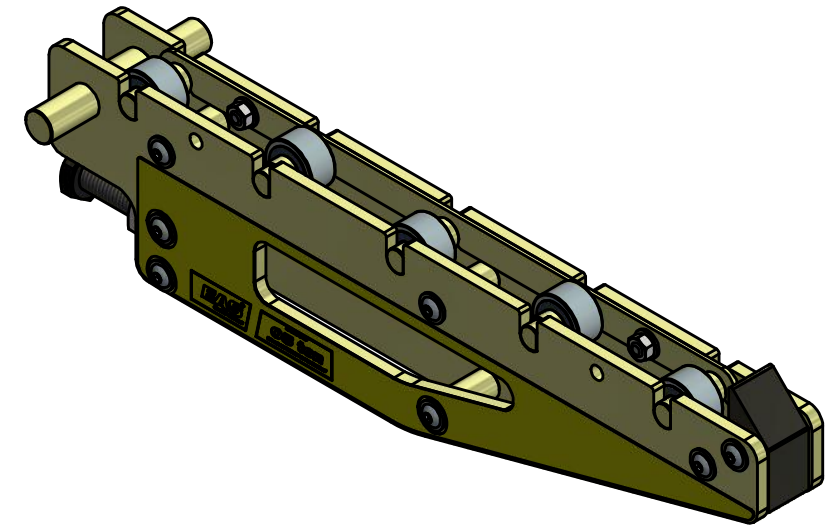
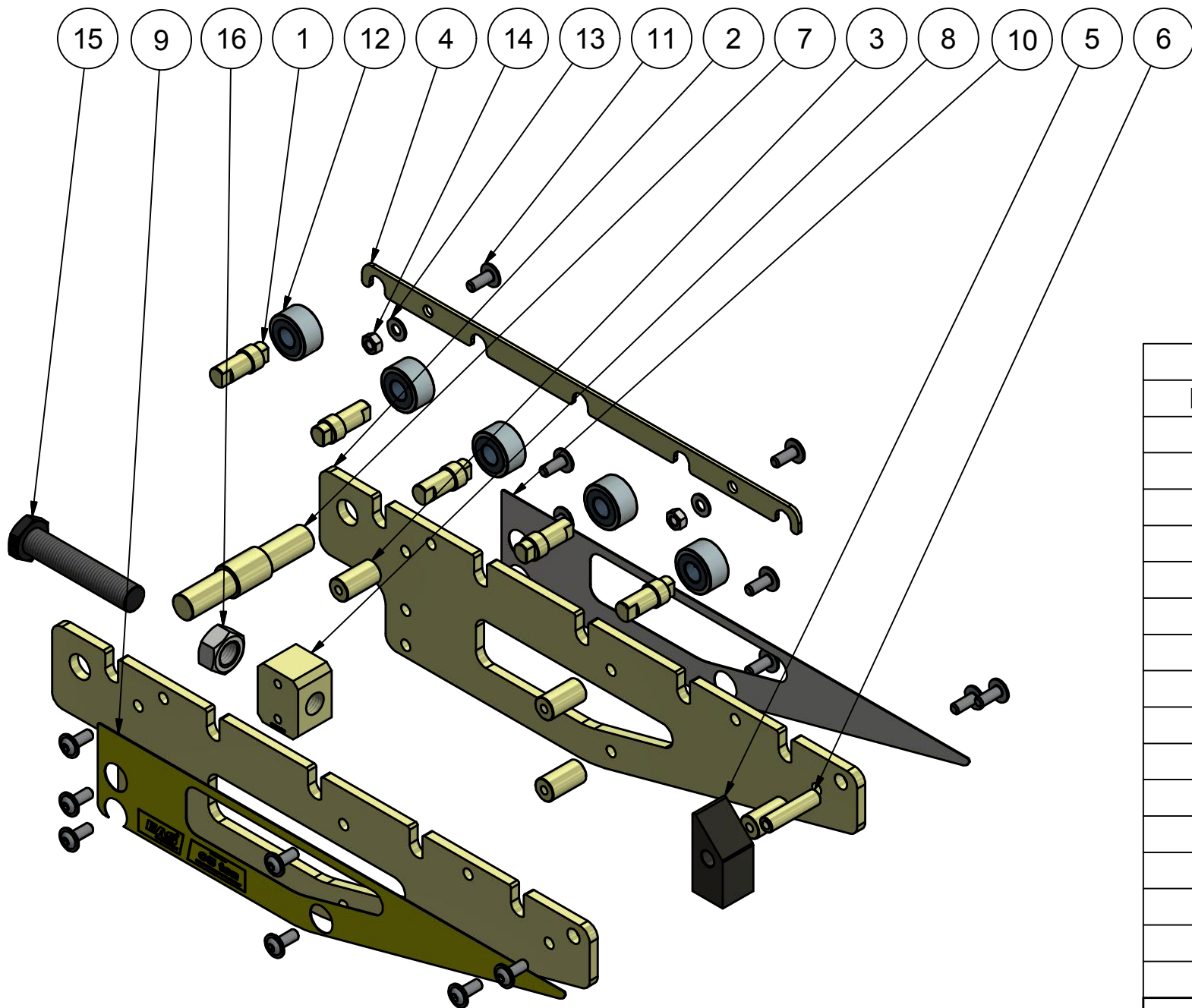
SECTION Z-Z



REVISION HISTORY EAS										
REV	ECO		DESCRIPTION			DATE	APPROVED			
-	E0105		RELEASED ACC. ECO			2017/11/27	welgravenj			
TOLERANCES ON DIMENSIONS UNLESS SPECIFIED ± MM[inch]						TOL. ON ANGLES UNLESS SPEC.	TOL. ON RADII UNLESS SPEC. ± MM[inch]			
SIZE	0.5-6 [.02-.24]	6-30 [.24-1.18]	30-120 [1.18-4.72]	120-315 [4.72-12.40]	315-1000 [12.40-39.37]		SIZE	0.5-3 [.02-.12]	3-6 [.12-.24]	6-30 [.24-1.18]
TOL.	0.1 [.004]	0.2 [.008]	0.3 [.012]	0.5 [.02]	0.8 [.03]	± 1'	TOL.	0.2 [.008]	0.5 [.02]	1 [.04]
SPECIFICATIONS					DIMENSIONS IN BRACKETS ARE IN [INCH]					
WEIGHT: ± 8,473 kg					NO CHANGE, NO PROGRESS					
					3,2 $\sqrt{Ra\mu m [Ra\mu]}$ FINISH UNLESS SPECIFIED					
ALL ANGULAR DIMENSIONS ARE ± 1' UNLESS SPECIFIED					SCALE			DESCRIPTION		
					1:3			EPR05-500 ASSY		
GROUP	C.				DO NOT SCALE DRAWING	DR.	Yue	DATE	17-1-2017	
TECH.	M.					CH.		DATE		
CODES								DRAWING NO.	FB814-950	
								Rev	9/02	
								Page 1 of 2		
								A3		



www.EASchangesystems.com



Parts List

ITEM	QTY	PART NUMBER	DESCRIPTION
1	5	FB627-104	ROLLER SHAFT
2	2	FB750-101	CONSOLE PLATE
3	4	FB751-186	SPACER
4	1	FB752-101	MOUNTING PLATE
5	1	FB754-044	END STOP
6	1	FB755-104	SHAFT END STOP
7	1	FB756-104	SUSPENSION SHAFT
8	1	FB757-690	LEVELLING BLOCK
9	1	FB887-026	DECAL-1 0,7mm PVC
10	1	FB888-026	DECAL-2 0,7mm PVC
11	16	CCE820-028-9A	SCREW M8x20
12	5	DQ1504-281	ROLLER
13	2	CAE1080-1081A	WASHER M8
14	2	CBB1080-1201D	NUT M8
15	1	DQ1509.028	POSITIONING BOLT
16	1	CBE1200.120-1D	NUT M20

TOLERANCES ON DIMENSIONS UNLESS SPECIFIED ± MM[inch]					TOL. ON ANGLES UNLESS SPEC.	TOL. ON RADII UNLESS SPEC. ± MM[inch]				
SIZE	0.5-6 [.02-.24]	6-30 [.24-1.18]	30-120 [1.18-4.72]	120-315 [4.72-12.40]		315-1000 [12.40-39.37]	SIZE	0.5-3 [.02-.12]	3-6 [.12-.24]	6-30 [.24-1.18]
TOL.	0.1 [.004]	0.2 [.008]	0.3 [.012]	0.5 [.02]	0.8 [.03]	± 1'	TOL.	0.2 [.008]	0.5 [.02]	1 [.04]

SPECIFICATIONS		DIMENSIONS IN BRACKETS ARE IN [INCH]				
WEIGHT: ± 8,473 kg		NO CHANGE, NO PROGRESS				www.EASchangesystems.com
ALL ANGULAR DIMENSIONS ARE ± 1' UNLESS SPECIFIED		FINISH UNLESS SPECIFIED $3.2 \sqrt{Ra\mu m [Ra\mu]}$				DESCRIPTION EPR05-500 ASSY
GROUP TECH. CODES	C. M.	DO NOT SCALE DRAWING	DR. Yue CH.	DATE 17-1-2017 DATE	DRAWING NO. FB814-950 Page 2 of 2	
					Rev 9/02 A3	