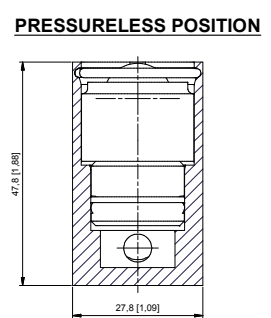
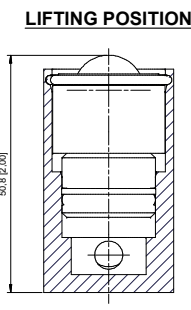
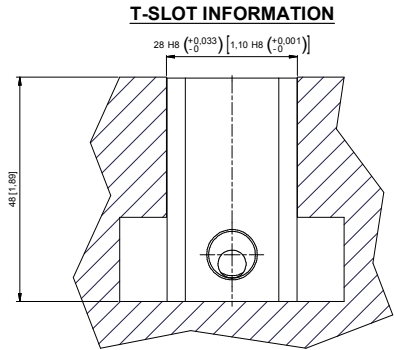
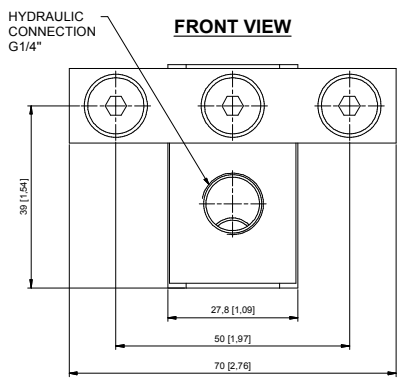


SINGLE HYDRAULIC BALL DIE LIFTER									
EHB28-...	LEBHT "A"	CAPACITY PER ROLLER (KG)	LIFTING CAPACITY (KG)	FB350-005	EHB28-550 (QTY)	EHB28-660 (QTY)	EHB28-670 (QTY)	EHB22-680 (QTY)	EHB28-690 (QTY)
3	175	150	450	1x Z=135	3	1	1	1	0
4	220	150	600	1x Z=190	4	1	1	1	0
5	265	150	750	1x Z=225	5	1	1	1	0
6	310	150	900	1x Z=270	6	1	1	1	0
7	355	150	1050	1x Z=315	7	1	1	1	0
8	400	150	1200	1x Z=360	8	1	1	1	0
9	445	150	1350	1x Z=405	9	1	1	1	0
10	490	150	1500	1x Z=450	10	1	1	1	0
11	535	150	1650	1x Z=495	11	1	1	1	0
12	580	150	1800	1x Z=540	12	1	1	1	0
13	625	150	1950	1x Z=585	13	1	1	1	0
14	670	150	2100	1x Z=630	14	1	1	1	0
15	715	150	2250	1x Z=675	15	1	1	1	0
16	760	150	2400	1x Z=720	16	1	1	1	0
17	805	150	2550	1x Z=765	17	1	1	1	0
18	850	150	2700	1x Z=810	18	1	1	1	0
19	895	150	2850	1x Z=855	19	1	1	1	0
20	940	150	3000	1x Z=900	20	1	1	1	0
21	985	150	3150	1x Z=945	21	1	1	1	0
22	1030	150	3300	1x Z=990	22	1	1	1	0
23	1075	150	3450	1x Z=1035	23	1	1	1	0
24	1120	150	3600	1x Z=1080	24	1	1	1	0

DOUBLE HYDRAULIC BALL DIE LIFTER										
EHB28-...	LENGHT "A"	CAPACITY PER ROLLER (KG)	LIFTING CAPACITY (KG)	FB350-005	FB350-005	EHB28-550 (QTY)	EHB28-660 (QTY)	EHB28-670 (QTY)	EHB28-680 (QTY)	EHB28-690 (QTY)
25	1168	150	3750	1x Z=540	1x Z=585	25	1	1	2	1
26	1213	150	3900	1x Z=585	1x Z=585	26	1	1	2	1
27	1258	150	4050	1x Z=585	1x Z=630	27	1	1	2	1
28	1303	150	4200	1x Z=630	1x Z=630	28	1	1	2	1
29	1348	150	4350	1x Z=630	1x Z=675	29	1	1	2	1
30	1393	150	4500	1x Z=675	1x Z=675	30	1	1	2	1
31	1438	150	4650	1x Z=675	1x Z=720	31	1	1	2	1
32	1483	150	4800	1x Z=720	1x Z=720	32	1	1	2	1
33	1528	150	4950	1x Z=720	1x Z=765	33	1	1	2	1
34	1573	150	5100	1x Z=765	1x Z=765	34	1	1	2	1
35	1618	150	5250	1x Z=765	1x Z=810	35	1	1	2	1
36	1663	150	5400	1x Z=810	1x Z=810	36	1	1	2	1
37	1708	150	5550	1x Z=810	1x Z=855	37	1	1	2	1
38	1753	150	5700	1x Z=855	1x Z=855	38	1	1	2	1
39	1798	150	5850	1x Z=855	1x Z=900	39	1	1	2	1
40	1843	150	6000	1x Z=900	1x Z=900	40	1	1	2	1
41	1888	150	6150	1x Z=900	1x Z=945	41	1	1	2	1
42	1933	150	6300	1x Z=945	1x Z=945	42	1	1	2	1
43	1978	150	6450	1x Z=945	1x Z=990	43	1	1	2	1
44	2023	150	6600	1x Z=990	1x Z=990	44	1	1	2	1
45	2068	150	6750	1x Z=990	1x Z=1035	45	1	1	2	1
46	2113	150	6900	1x Z=1035	1x Z=1035	46	1	1	2	1
47	2158	150	7050	1x Z=1035	1x Z=1080	47	1	1	2	1
48	2203	150	7200	1x Z=1080	1x Z=1080	48	1	1	2	1



Parts List			
ITEM	QTY	PART NUMBER	DESCRIPTION
1	*	FB350-005	BASE EHB28
2	*	EHB28-660	FRONT CONNECT ASSY
3	*	EHB28-670	END STOP ASSY
4	*	EHB 22-680	AIR RELIEF ASSY
5	*	EHB28-550	BALL INSERT ASSY
6	*	EHB28-690	MIDDLE CONNECTION ASSY

TOLERANCES ON DIMENSIONS UNLESS SPECIFIED # MM(INCH)			TOL. ON ANGLES UNLESS SPEC.		
SIZE	0-6 (02-24)	6-30 (24-118)	30-120 (118-472)	120-315 (472-1240)	315-1000 (1240-3937)
TOL.	0.11(004)	0.2 (008)	0.3 (012)	0.5 (02)	0.8 (03)

DIMENSIONS IN BRACKETS ARE IN INCH		
NO CHANGE, NO PROGRESS		
3.2 \sqrt{Ra} UNLESS SPECIFIED		
SCALE 1.1:1		
ALL ANGULAR DIMENSIONS ARE # 1 UNLESS SPECIFIED		

REV	DESCRIPTION	DATE	DRAFTER	GROUP	TECH	SCALE	DR	DATE	NO.	DATE	REV
A	ADD CAPACITY COLUMNS TO THE TABLE	2019/11/19	Yue	M	C	1:1	Issued	2013/2/22	EHB28-...		9/02



DESCRIPTION: DIE LIFTER BALL 28

www.EASchangesystems.com