



ETDC TRAVELLING DIE CLAMPS

UK



Time saving
solutions

www.EASchangesystems.com

Save time and money with Travelling Die Clamps solutions from EAS

The answers to the most asked questions:

- The globally most used integrated Engel/EAS QMC clamping cylinders Applied on new machines only
- Keeps the platen free of any obstructions
- Can be applied on horizontal and vertical presses
- Tool mounted bolts at low pricing

Why EAS change systems?

EAS offers a wide range of hydraulic clamps with, for example, self-locking and sensor features, for vertical as well as horizontal mold changes, as well as magnetic mold clamping systems. Apart from clamping solutions, EAS also offers ejector couplers, mono and multi couplers for simple and fast connection to all utility connections, mold change tables and carriages as well as inspection units, mold rotate units and mold & die storage systems. EAS can supply all your complete QMC, QDC or SMED solutions from one source.



Travelling Die Clamps solution

The EDCV-1 keeps cylinders under pressure, thus preventing the system against hose leakage. Two single acting hydraulic circuits can be connected by the EDCV-1



ETDC solution for maximum safety and control

ETDC INTEGRATED WEDGE CLAMP features

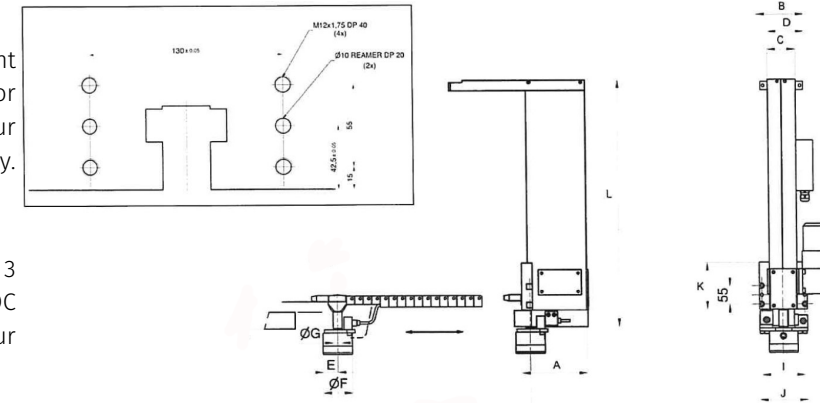
A. Sensor Controlled

The ETDC is equipped with a couple of sensors. These sensors do monitor automatically the clamped and the unclamped status of the ETDC. This allows a maximum of safety to prevent machines and materials damage and incident.

ECA pull cylinder solution for maximum Control and Operator Friendly

A. Different clamp position

AS ETDC has the advantage to adapt in different clamp position. This means there is no need for standardized clamp plate, and allows to adapt our ETDC in any application and save money.

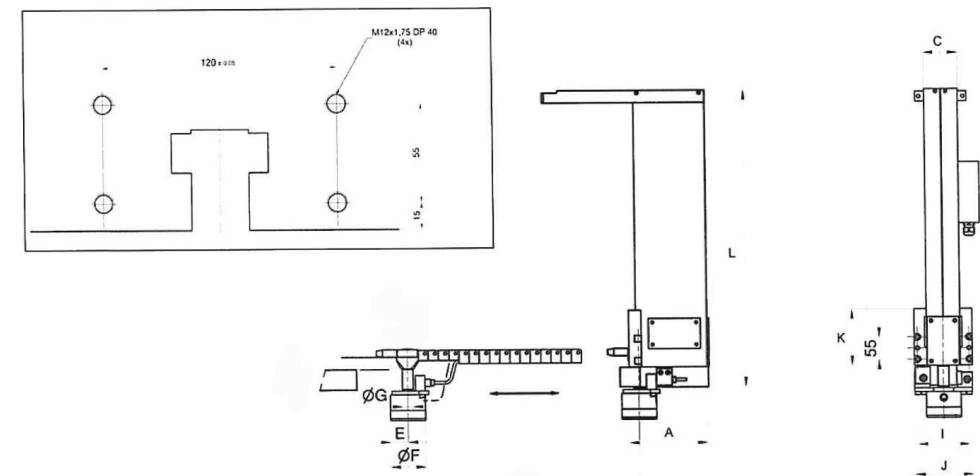


B. Applicable with 3 types of clamps

EAS offer you the possibility to use your ETDC with 3 different types of Clamps, to fit any application. ETDC can work with our MTC clamp, our ECA clamp and our MHC clamp.

Selection charts

ELECTRIC DRIVEN			Dimensions in mm										
EAS TYPE	Hydraulic pressure (bar)	Moving speed (mm/sec)	A	B	C	D	E	F	G	I	J	K	L
ETDC-4	250	100-150	195	187	85	94.5	59	73	25	130	145	140	S/2+435
ETDC-6	250	100-150	195	187	85	94.5	49	88	30	130	145	140	S/2+435
ETDC-10	250	100-150	195	187	85	97.5	42	108	40	130	145	140	S/2+435



PNEUMATIC DRIVEN			Dimensions in mm										
EAS TYPE	Hydraulic pressure (bar)	Moving speed (mm/sec)	A	B	C	D	E	F	G	I	J	K	L
ETDC-4	250	33-100	200	-	83	77	55	65	25	120	150	140	S+270
ETDC-6	250	33-100	200	-	83	77	55	82	30	120	150	140	S+270
ETDC-10	250	33-100	200	-	83	77	55	100	40	120	150	140	S+270

Other solutions



MCS

Magnetic clamping systems (MCS) are also available, shortening changeover time by increasing productivity. These systems can help reduce production costs and require little to no standardization of molds/dies. Our systems offer the highest level of safety for operators, molds, and equipment.



ELY

Every machine in your factory has its own specifications. If standardization of backplates is not possible, EAS has developed a hydraulic clamp that allows different sized molds to be clamped into the IMM. With one style of clamp, it is easy to have a smooth and quick changeover from one tool to the next. Whether you want a manual or fully automated operation, the ELY rocker clamp can do the job.



MOD

Meet our best-in-class clamping product: safe, durable, and cost-efficient. Thanks to the 5 ° angle on the plunger end, the MOD wedge clamping cylinders are self-locking, as continuous pressure is not needed for the clamp to stay locked. These hydraulic clamps are designed for use on machines with the EUROMAP drilling pattern. The MOD series feature metric mounting patterns and BSP oil fittings.

Europe/The Netherlands

EAS Europe B.V.

De Hooge Hoek 19A / 3927 GG Renswoude
Phone: +31 318 477 010 / The Netherlands
info@EASchangesystems.com

USA

EAS Mold & Die Change Systems, Inc.

200 Augusta Arbor Way, Suite B
Greenville, South Carolina 29605
Phone: +1 864 603 3386 / United States of America
easus@EASchangesystems.com

France

EAS France S.A.R.L.

ZI Alpespace / 218 Voie Aristide Bergès
73800 Sainte Hélène du Lac
Phone: +33 4 79 65 04 10 / France
easfr@EASchangesystems.com

China

苏州易爱使快速换模系统有限公司

Suzhou EAS Change Systems Co., Ltd

No.1188 Pangjin Road / Wujiang City / 215200
Phone: +86-512-63093091 / PR China
sales-china@EASchangesystems.com

Italy

EAS MED S.r.L.

Via J. F. Kennedy, 19/C2 / 20871 Vimercate (MB)
Phone: +39 039 608 3816, +39 039 626 0654 / Italy
easmed@EASchangesystems.com