



# MPR, MSR & MTR PULL CLAMP CYLINDERS

UK



Time saving  
solutions

[www.EASchangesystems.com](http://www.EASchangesystems.com)

# Save time and money with clamping solutions from EAS

## Why EAS change systems?

EAS offers a wide range of solutions and components that allow you to customize your changeover process with efficiency and safety in mind. If your machines and tools are not standardized yet, EAS offers a quick clamping solution that will adapt to your current tool and allow flexibility as your tool room continues to grow.

## EAS clamping solution

How easy would it be if you only needed one clamp type to suit different molds or dies? To have a clamp in stock that can be operated in both horizontal and vertical applications.

Every machine in your factory has its own specifications. And depending on your level of standardization, each tool may have a different sized back plate. Of course, standardizing is the way go. If standardizing your backplates is not possible due to cost or volume of tools, EAS offers the ideal clamping solution. Our clamp allows for a quicker, safer, more flexible clamping solution. Whether you want a manual or fully automated operation, EAS clamps can do the job.

EAS' clamps are often offered to you in a package. This would include Clamps + Pump + Control Unit. This package flow chart starts with the choice of your type of clamp. After this, EAS helps you choose the pump and control unit based on your previous choices and provides installation cost.



# MPR pull cylinder solution for maximum safety and control

## Position sensor (Optional)

The clamping position sensor is an optional feature. This option consists of adding a sensor on the MPR clamp. This sensor will detect and inform you about the clamps position on the press and indicate the clamping status.

## MPR as an operator friendly clamping solution

### Extra oil connections (Optional)

For MPR clamp, there is the possibility to add an extra oil connection to your application. This feature is optional.

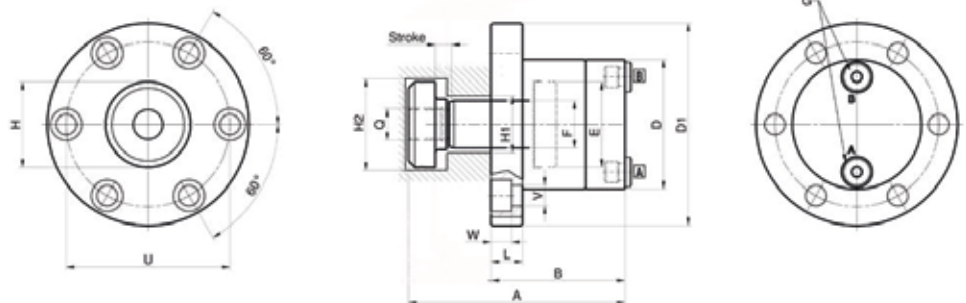


## Get personalized services for your Clamps

### Retrofit controls package (Optional)

With this clamp, you can choose the option of retrofit controls package. This consist of a pump unit including an electrical cabinet with operating panel.

## MPR Technical characteristics



### Selection charts

EAS TYPE	Clamping force (ton)	Operating pressure (bar)	Max flow (l/min)	Oil volume (cm3)	Stroke (mm)
<b>MPR 51</b>	56	350	2.5	16	10
<b>MPR 91</b>	91	350	8.6	26	10
<b>MPR 141</b>	143	350	15	41	10

EAS TYPE	Dimensions in mm											
	A	B	D	D1	E	F	G	H	H1	H2	L	U
<b>MPR 51</b>	137.5	85	82	128	54	30	G1/4"	54	36	58	20	104
<b>MPR 91</b>	169	100	104	160	70	40	G1/4"	76	48	82	28	130
<b>MPR 141</b>	201	115	126	192	90	50	G1/4"	86	58	92	35	156

# MTR pull cylinder solution for maximum **safety and control**



## Standard sensor

The clamping sensor is a standard feature. This consists of having a sensor on the MTR clamp. This sensor will detect and inform you about the clamps position on the press and indicate the clamping status.

## MTR as an **operator friendly** clamping solution

### Extra oil connections (Optional)

For MTR clamp, there is the possibility to add an extra oil connection to your application. This feature is optional.

### Clamp arm

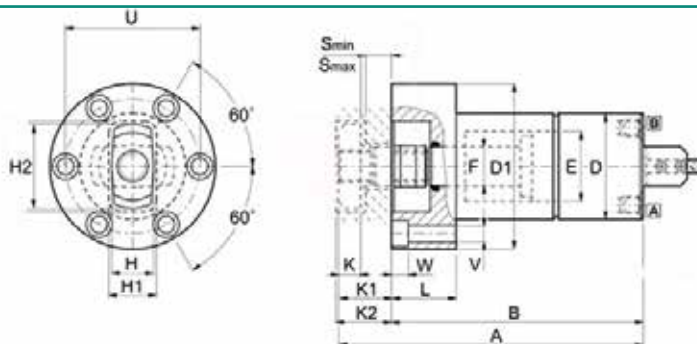
For MTR clamp, we have added a clamp arm below the platen. This arm is permitting a free platen surface for an easier installation and maintenance.

## Get **personalized services** for your Clamps

### Retrofit controls package (Optional)

With this clamp, you can choose the option of retrofit controls package. This consists of a pump unit including an electrical cabinet with operating panel.

## MTR Technical characteristics



### Selection charts

EAS TYPE	Clamping force (ton)	Operating pressure (bar)	Max flow (l/min)	Oil volume (cm <sup>3</sup> )	Stroke (mm)
<b>MTR 51</b>	56	350	2	68.6	43
<b>MTR 91</b>	91	350	2	145.1	56
<b>MTR 141</b>	154	350	2	294.7	67

EAS TYPE	Dimensions in mm											
	A	B	D	D1	E	F	G	H	H1	H2	L	U
<b>MTR 51</b>	246	204	82	128	54	30	G1/4"	33	37	65	50	104
<b>MTR 91</b>	305	250	104	160	70	40	G3/8"	40	46	80	61	130
<b>MTR 141</b>	356	290	126	192	90	50	G3/8"	50	58	95	72	156

# MSR pull cylinder solution for maximum safety and control



## Position sensor (Optional)

The clamping position sensor is an optional feature. This option consists of adding a sensor on the MSR clamp. This sensor will detect and inform you about the clamps position on the press and indicate the clamping status.

# MSR as an Operator friendly clamping solution

## Extra oil connections (Optional)

For MTR clamp, there is the possibility to add an extra oil connection to your application. This feature is optional.

## Clamp arm

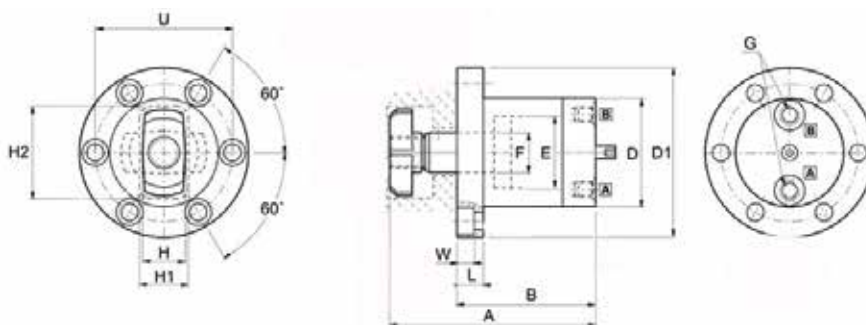
For MSR clamp, we have added a clamp arm below the platen. This arm is permitting a free platen surface for an easier installation and maintenance.

# Get personalized services for your Clamps

## Retrofit controls package (Optional)

With this clamp, you can choose the option of retrofit controls package. This consist of a pump unit including an electrical cabinet with operating panel.

# MSR Technical characteristics



## Selection charts

EAS TYPE	Clamping force (ton)	Operating pressure (bar)	Max flow (l/min)	Oil volume (cm3)	Stroke (mm)
<b>MSR 51</b>	56	350	1.5	32	20
<b>MSR 91</b>	91	350	1.5	52	20
<b>MSR 141</b>	143	350	2.5	123	20

EAS TYPE	Dimensions in mm											
	A	B	D	D1	E	F	G	H	H1	H2	L	U
<b>MSR 51</b>	157	105	82	128	54	30	G1/4"	33	37	70	20	104
<b>MSR 91</b>	178	115	104	160	70	40	G3/8"	40	46	86	28	130
<b>MSR 141</b>	224	140	126	192	90	50	G3/8"	50	58	103	35	156

## Other solutions



### MCS

Magnetic clamping systems (MCS) are also available, shortening changeover time by increasing productivity. These systems can help reduce production costs and require little to no standardization of molds/dies. Our systems offer the highest level of safety for operators, molds, and equipment.

### HECS

This original Engel clamping system can be applied on any new injection molding machine as well as on vertical presses. HECS keeps the mounting platen free as the standard available EEB bolts mounted on the tools disappear into openings in the platen.

### ELY

Every machine in your factory has its own specifications. If standardization of backplates is not possible, EAS has developed a hydraulic clamp that allows different sized molds to be clamped into the IMM. With one style of clamp, it is easy to have a smooth and quick changeover from one tool to the next. Whether you want a manual or fully automated operation, the ELY rocker clamp can do the job.

#### Europe/The Netherlands

##### EAS Europe B.V.

De Hooge Hoek 19A / 3927 GG Renswoude  
Phone: +31 318 477 010 / The Netherlands  
info@EASchangesystems.com

#### USA

##### EAS Mold & Die Change Systems, Inc.

200 Augusta Arbor Way, Suite B  
Greenville, South Carolina 29605  
Phone: +1 864 603 3386 / United States of America  
easus@EASchangesystems.com

#### France

##### EAS France S.A.R.L.

ZI Alpespace / 218 Voie Aristide Bergès  
73800 Sainte Hélène du Lac  
Phone: +33 4 79 65 04 10 / France  
easfr@EASchangesystems.com

#### China

##### 苏州易爱使快速换模系统有限公司

##### Suzhou EAS Change Systems Co., Ltd

No.1188 Pangjin Road / Wujiang City / 215200  
Phone: +86-512-63093091 / PR China  
sales-china@EASchangesystems.com

#### Italy

##### EAS MED S.r.L.

Via J. F. Kennedy, 19/C2 / 20871 Vimercate (MB)  
Phone: +39 039 608 3816, +39 039 626 0654 / Italy  
easmed@EASchangesystems.com