



ECA & MHC PULL CLAMP CYLINDERS

UK



Time saving
solutions

www.EASchangesystems.com

MHC pull cylinder solution for maximum safety and control

A. External control

MHC pull cylinder pressure is controlled by external device such as pump or press. This control avoid pressure drop.

MHC as an operator friendly clamping solution

A. Easy to position in the T-Groove

The pump is equipped with check valves that mechanically lock to keep a constant pressure to the clamp and avoid pressure variations. These valves will block the fluid inside the circuit pump and prevent a drop in pressure

B. Swivel plate to level out unevenness of the press platen at the clamping surface

The swivel plate is a plate mounted on the MHC, which can move a bit and set itself to the unevenness of the bed of the press. This optimize the clamping system.

C. Larger clamping stroke

MHC clamp is having larger clamping force of 12mm.



Get personalized services for your clamps

A. Low maintenance

Our pull cylinder clamp do not required high maintenance, allowing low maintenance cost and time saving.

B. Wide clamping range

The ECA is one of our clamps with the widest clamping range size. This characteristic provide a clamp type available for a lot of different production and press size.

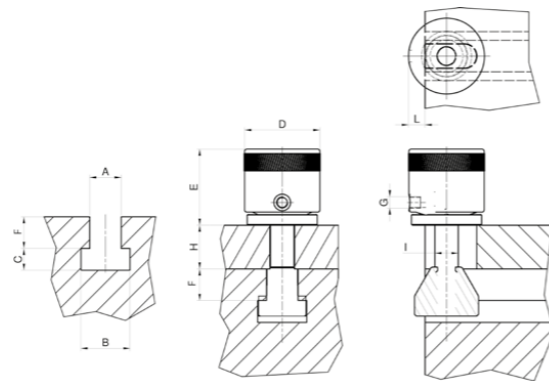
C. Retrofit controls package (option)

With this clamp, you can choose the option of retrofit controls package. This consist of a pump unit including an electrical cabinet with operating panel.

Technical characteristics

EAS TYPE	Clamping force (kN)	Operating pressure (bar)	Stroke (mm)	Oil volume (cm ³)	Max H+D (mm)
MHC 50/22	44	350	12	15	120
MHC 70/22-28	68.7	350	12	23.5	150
MHC 110/28-36	116.1	350	12	39.8	200

EAS TYPE	Dimensions in mm							
	A (min and max T-slot size)	B	C	D	E	G	I	Lmax
MHC 50/22	22	37	16	62	73.5	G 1/4"	17.5	17
MHC 70/22-28	22-28	37-36	16-20	70	77	G 1/4"	21.5	25
MHC 110/28-36	28-26	36-56	20-25	86	86	G 1/4"	27	30



ECA pull cylinder solution for maximum control and operator friendly

A. External control

ECA pull cylinder pressure is controlled by external device such as pump or press. This control avoid pressure drop.

B. Easy to position in T-Groove

Thanks to its ergonomic design, the ECA pull cylinder is easy to position in the T-groove to facilitate installation.



Get personalized services for your Clamps

A. Low maintenance

Our pull cylinder clamp do not required high maintenance, allowing low maintenance cost and time saving.

B. Wide clamping range

The ECA is one of our clamps with the widest clamping range size. This characteristic provide a clamp type available for a lot of different production and press size.

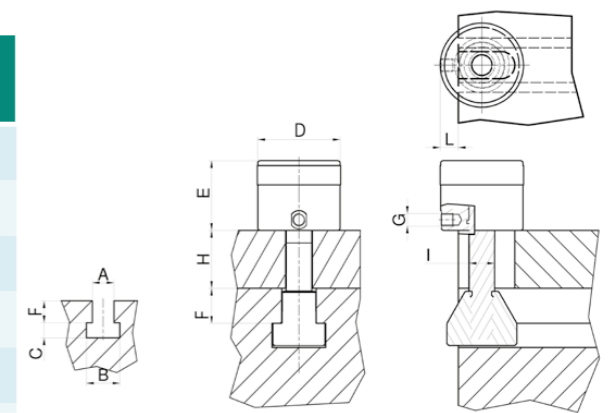
C. Retrofit controls package (option)

With this clamp, you can choose the option of retrofit controls package. This consist of a pump unit including an electrical cabinet with operating panel.

Technical characteristics

EAS TYPE	Clamping force (kN)	Operating pressure (bar)	Stroke (mm)	Oil volume (cm ³)	Max H+F (mm)
ECA 40/18-22	40	350	8	8.5	90
ECA 60/18-22	60	350	8	13.5	100
ECA 100/22-28	100	350	8	23	110
ECA 160/28-36	160	350	8	38	120
ECA 230/36	250	350	8	57	140

EAS TYPE	Dimensions in mm							
	A (min and max T-slot size)	B	C	D	E	G	I	Lmax
ECA 40/18-22	18-22	38-45	10.5-14.5	65	58	G 1/4"	25	18
ECA 60/18-22	18-22	38-45	10.5-14.5	72	65	G 1/4"	25	18
ECA 100/22-28	22-28	45-57	14.5-18	82	71	G 1/4"	28	20
ECA 160/28-36	28-36	57-73	18-23	106	82	G 1/4"	40	25
ECA 230/36	36	73	23	127	100	G 1/4"	50	25



Other solutions



ELY

Every machine in your factory has its own specifications. If standardization of backplates is not possible, EAS has developed a hydraulic clamp that allows different sized molds to be clamped into the Injection Molding Machine. With one style of clamp, it is easy to have a smooth and quick changeover from one tool to the next. Whether you want a manual or fully automated operation, the ELY rocker clamp can do the job.



MOD

Meet our best-in-class clamping product: safe, durable, and cost-efficient. Thanks to the 5 ° angle on the plunger end, the MOD wedge clamping cylinders are self-locking, as continuous pressure is not needed for the clamp to stay locked. These hydraulic clamps are designed for use on machines with the EUROMAP drilling pattern. The MOD series feature metric mounting patterns and BSP oil fittings.



HECS

This original Engel clamping system can be applied on any new injection molding machine as well as on vertical presses. HECS keeps the mounting platen free as the standard available EEB bolts mounted on the tools disappear into openings in the platen.

Europe/The Netherlands

EAS Europe B.V.

De Hooge Hoek 19A / 3927 GG Renswoude
Phone: +31 318 477 010 / The Netherlands
info@EASchangesystems.com

USA

EAS Mold & Die Change Systems, Inc.

200 Augusta Arbor Way, Suite B
Greenville, South Carolina 29605
Phone: +1 864 603 3386 / United States of America
easus@EASchangesystems.com

France

EAS France S.A.R.L.

ZI Alpespace / 218 Voie Aristide Bergès
73800 Sainte Hélène du Lac
Phone: +33 4 79 65 04 10 / France
easfr@EASchangesystems.com

China

苏州易爱使快速换模系统有限公司

Suzhou EAS Change Systems Co., Ltd

No.1188 Pangjin Road / Wujiang City / 215200
Phone: +86-512-63093091 / PR China
sales-china@EASchangesystems.com

Italy

EAS MED S.r.L.

Via J. F. Kennedy, 19/C2 / 20871 Vimercate (MB)
Phone: +39 039 608 3816, +39 039 626 0654 / Italy
easmed@EASchangesystems.com