

ERC Rocker Clamp



The ERC clamp is designed to fit press platens with T-slots. This enables easy clamping of the mold or die. Shorten the setup time and optimize your tool clamping process.

Improved design

Our R&D department has added special rollers to the design of the ERC hydraulic rocker clamp. Now horizontal as well as vertical machines are supported.



Perfect fit

The ERC clamp is fitted with a T-slot pin which screws in and out of the ERC base. This allows easy and quick adjustment of the ERC to the DIN 650 T-slot. If desired, the ERC can even be exchanged between machines.

Not only is the design compact, the ERC is standard available in a large range. On the bigger versions, the ERC100, ERC160 & ERC 250, the handles on the clamp come as standard. Ordering has been made easy thanks to the order information sheet. Technical information is organized on separate documentation, complete with more in-depth information and specifications on the several options.

ERC advantages

- fits in any T-slot (according to DIN 650); versatile in application
- very suitable to retrofit; flexible in practice
- ordering overview; quick and simple ordering
- single piece construction; fast delivery times
- compact design; fitting narrow clamping edges

ERC application

- on press beds and rams
- for clamping and locking processes on machines and equipment
- for space constrained environments
- at ambient temperatures of up to max. 200°C

ERC features

- for 20 -40 -60 -100-160-250 kN
- suitable for non-standardized die back-plates
- unique adjustable T-slot pin; fits in any T-slot according to DIN 650
- standard handles on bigger ERC models
- operating pressure: 350 bar
- single acting, spring returned clamping system
- one oil connection

ERC Rocker Clamp

EAS Power unit and controller

Operate the ERC clamping cylinders with the EAS hydraulic power unit and controller. Functioning separately from your machine hydraulics, these power units are especially suitable for the operation of small and simple hydraulic clamping fixtures. The power unit is easily operated with the intuitive control panel.

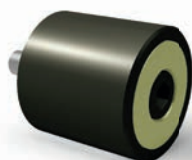


ERC Options

Add extra functionality to the standard ERC clamp with the following options:

Support roller

The optional support roller ensures the fixation of the ERC on horizontal machines. It prevents the clamp from pivoting on horizontal machines.



Air cylinder

In the standard situation the rocker clamp is moved along the T-slot manually. The clamp can be fitted with an air cylinder to automate the clamp movement along the T-slot pneumatically.



Proximity sensor

Further automate the clamping process with the proximity switch. The sensor signals when the mold or die is in the desired proximity, after which it signals the hydraulic circuit to initiate the clamping sequence.



Hydraulic check valve

The hydraulic check valve on the ERC is an extra safety measure. Each clamp that is fitted with a check valve will keep the pressure on the cylinder constant, even if there is a leakage in the main hydraulic system.

